

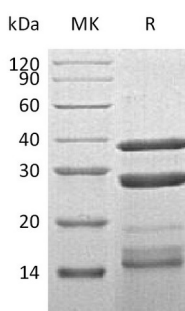
**Product Name: Recombinant Human CTSS (C-6His)**  
**Catalog #: PHH2046**



## Summary

<b>Name</b>	Cathepsin S/CTSS
<b>Purity</b>	Greater than 95% as determined by reducing SDS-PAGE
<b>Endotoxin level</b>	<1 EU/μg as determined by LAL test.
<b>Construction</b>	Recombinant Human Cathepsin S is produced by our Mammalian expression system and the target gene encoding Gln17-Ile331 is expressed with a 6His tag at the C-terminus.
<b>Accession #</b>	AAH02642.1
<b>Host</b>	Human Cells
<b>Species</b>	Human
<b>Predicted Molecular Mass</b>	36.9&25&11.2 KDa
<b>Formulation</b>	Supplied as a 0.2 μm filtered solution of 20mM MES, 150mM NaCl, 10% Glycerol, pH 5.5.
<b>Shipping</b>	The product is shipped on dry ice/polar packs. Upon receipt, store it immediately at the temperature listed below.
<b>Stability&amp;Storage</b>	Store at ≤-70°C, stable for 6 months after receipt. Store at ≤-70°C, stable for 3 months under sterile conditions after opening. Please minimize freeze-thaw cycles.
<b>Reconstitution</b>	

## SDS-PAGE image



## Background

**Alternative Names** Cathepsin S; CTSS

**Background** Cathepsin S is a lysosomal enzyme that belongs to the papain family of cysteine proteases. This protein is expressed by antigen presenting cells including

**Product Name: Recombinant Human CTSS (C-6His)**  
**Catalog #: PHH2046**



---

macrophages, B-lymphocytes, dendritic cells and microglia. Moreover, cathepsin S is expressed in some epithelial cells. Compared with the abundant cathepsins B, L and H, cathepsin S shows a restricted tissue distribution, with highest levels in spleen, heart, and lung. In addition, evidences indicated that cathepsin S generates A beta from amyloidogenic fragments of beta APP in the endosomal/lysosomal compartment, and is implicated in the pathogenesis of Alzheimer' s disease (AD) and Down Syndrome (DS).

**Note**

For Research Use Only , Not for Diagnostic Use.