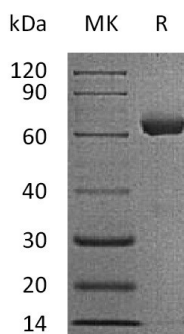


## Summary

<b>Name</b>	VSIG3/IGSF11/BTIGSF/CXADR like 1
<b>Purity</b>	Greater than 95% as determined by reducing SDS-PAGE
<b>Endotoxin level</b>	<1 EU/μg as determined by LAL test.
<b>Construction</b>	Recombinant Human Immunoglobulin Superfamily Member 11 is produced by our Mammalian expression system and the target gene encoding Leu23-Gly245 is expressed with a human IgG1 Fc tag at the C-terminus.
<b>Accession #</b>	Q5DX21
<b>Host</b>	Human Cells
<b>Species</b>	Human
<b>Predicted Molecular Mass</b>	50.7 KDa
<b>Formulation</b>	Lyophilized from a 0.2 μm filtered solution of PBS, pH 7.4.
<b>Shipping</b>	The product is shipped at ambient temperature. Upon receipt, store it immediately at the temperature listed below.
<b>Stability&amp;Storage</b>	Store at ≤-70°C, stable for 6 months after receipt. Store at ≤-70°C, stable for 3 months under sterile conditions after opening. Please minimize freeze-thaw cycles.
<b>Reconstitution</b>	Always centrifuge tubes before opening. Do not mix by vortex or pipetting. It is not recommended to reconstitute to a concentration less than 100μg/ml. Dissolve the lyophilized protein in distilled water. Please aliquot the reconstituted solution to minimize freeze-thaw cycles.

## SDS-PAGE image



## Background

**Product Name: Recombinant Human IGSF11 (C-Fc)**  
**Catalog #: PHH1992**



---

**Alternative Names**

BT-IgSF; CT119; CXADRL1; Igsf13; VSIG3

**Background**

Immunoglobulin superfamily member 11(IGSF11) is abundantly expressed in testis and ovary and to a lower extent in brain, kidney and skeletal muscle.IGSF11 functions as a cell adhesion molecule through homophilic interaction and can also stimulates cell growth.IGSF proteins share significant homology with endothelial cell-selective adhesion molecule and coxsackievirus and adenovirus receptor, which mediates cell attachment and homotypic intercellular interactions.

**Note**

For Research Use Only , Not for Diagnostic Use.