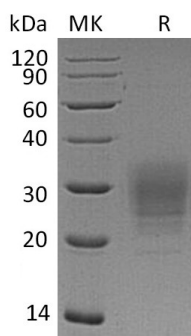


## Summary

<b>Name</b>	V-set and transmembrane domain-containing protein 1/VSTM1
<b>Purity</b>	Greater than 95% as determined by reducing SDS-PAGE
<b>Endotoxin level</b>	<1 EU/μg as determined by LAL test.
<b>Construction</b>	Recombinant Human V-set And Transmembrane Domain-Containing Protein 1 is produced by our Mammalian expression system and the target gene encoding Tyr17-Thr135 is expressed with a 6His tag at the C-terminus.
<b>Accession #</b>	Q6UX27
<b>Host</b>	Human Cells
<b>Species</b>	Human
<b>Predicted Molecular Mass</b>	14.6 KDa
<b>Formulation</b>	Lyophilized from a 0.2 μm filtered solution of PBS, pH 7.4.
<b>Shipping</b>	The product is shipped at ambient temperature. Upon receipt, store it immediately at the temperature listed below.
<b>Stability&amp;Storage</b>	Store at ≤-70°C, stable for 6 months after receipt. Store at ≤-70°C, stable for 3 months under sterile conditions after opening. Please minimize freeze-thaw cycles.
<b>Reconstitution</b>	Always centrifuge tubes before opening. Do not mix by vortex or pipetting. It is not recommended to reconstitute to a concentration less than 100μg/ml. Dissolve the lyophilized protein in distilled water. Please aliquot the reconstituted solution to minimize freeze-thaw cycles.

## SDS-PAGE image



## Background

**Product Name: Recombinant Human VSTM1 (C-6His)**  
**Catalog #: PHH1823**



---

**Alternative Names**

V-set and transmembrane domain-containing protein 1;SIRL-1;Signal inhibitory receptor on leukocytes-1;VSTM1

**Background**

V-set and transmembrane domain-containing protein 1 is a single-pass membrane protein. VSTM1 Contains 1 Ig-like V-type domain, in humans is encoded by the VSTM1 gene. It expressed on myeloid (neutrophils, eosinophils and monocytes) but not on lymphoid cells. It behaves as a cytokine, promoting IL17A secretion by CD4+ T-cells, and differentiation and activation of IL17 producing helper T-cells (TH17). Inhibitory immune receptor involved in the regulation of phagocytes.

**Note**

For Research Use Only , Not for Diagnostic Use.