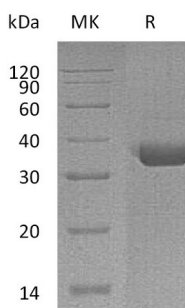


Summary

Name	Tryptase alpha/beta-1/TPSAB1
Purity	Greater than 95% as determined by reducing SDS-PAGE
Endotoxin level	<1 EU/μg as determined by LAL test.
Construction	Recombinant Human Tryptase Alpha/Beta-1 is produced by our Mammalian expression system and the target gene encoding Ile31-Pro275 is expressed with a 6His tag at the C-terminus.
Accession #	Q86TM8
Host	Human Cells
Species	Human
Predicted Molecular Mass	28.8 KDa
Formulation	Lyophilized from a 0.2 μm filtered solution of 1M NaCl, 0.05mM Heparin, 50mM sodium acetate, 0.01% sodium azide, pH 5.0.
Shipping	The product is shipped at ambient temperature. Upon receipt, store it immediately at the temperature listed below.
Stability&Storage	Store at ≤-70°C, stable for 6 months after receipt. Store at ≤-70°C, stable for 3 months under sterile conditions after opening. Please minimize freeze-thaw cycles.
Reconstitution	Always centrifuge tubes before opening. Do not mix by vortex or pipetting. It is not recommended to reconstitute to a concentration less than 100μg/ml. Dissolve the lyophilized protein in distilled water. Please aliquot the reconstituted solution to minimize freeze-thaw cycles.

SDS-PAGE image



Background

Product Name: Recombinant Human TPSAB1 (C-6His)
Catalog #: PHH1732



Alternative Names

tryptase alpha/beta 1; Tryptase 1; TPS1; TPS2; TPSAB1; TPSB1

Background

Tryptases are serine proteases with trypsin-like specificity. Together with chymases and Cathepsin G, tryptases are important players in mast cell mediation of inflammatory and allergic responses. Tryptase alpha/beta-1 (TPSAB1), also known as mast cell protease 7 (MCPT7), it exhibits anticoagulant activity due to its ability to degrade fibrinogen in the presence of a diverse array of protease inhibitors in plasma. The two Isoform 1 and isoform 2 are expressed in lung, stomach, spleen, heart and skin; in these tissues, isoform 1 is predominant. Isoform 2 is expressed in aorta, spleen, and breast tumor, with highest levels in the endothelial cells of some blood vessels surrounding the aorta, as well as those surrounding the tumor and low levels, if any, in mast cells. Isoform 2 cleaves large substrates, such as fibronectin, more efficiently than isoform 1, but seems less efficient toward small substrates. It may play a role in innate immunity.

Note

For Research Use Only , Not for Diagnostic Use.