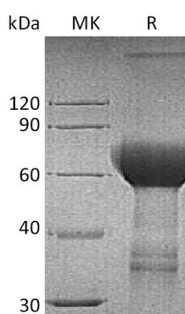


## Summary

<b>Name</b>	TROP-2/TACSTD2/Tumor-associated Calcium Signal Transducer 2 (Thr88-Thr274,187AA)
<b>Purity</b>	Greater than 95% as determined by reducing SDS-PAGE
<b>Endotoxin level</b>	<1 EU/ $\mu$ g as determined by LAL test.
<b>Construction</b>	Recombinant Human Tumor-associated Calcium Signal Transducer 2 is produced by our Mammalian expression system and the target gene encoding Thr88-Thr274 is expressed with a human IgG1 Fc tag at the C-terminus.
<b>Accession #</b>	P09758
<b>Host</b>	Human Cells
<b>Species</b>	Human
<b>Predicted Molecular Mass</b>	48.7 KDa
<b>Formulation</b>	Lyophilized from a 0.2 $\mu$ m filtered solution of PBS, pH 7.4.
<b>Shipping</b>	The product is shipped at ambient temperature. Upon receipt, store it immediately at the temperature listed below.
<b>Stability&amp;Storage</b>	Store at $\leq$ -70°C, stable for 6 months after receipt. Store at $\leq$ -70°C, stable for 3 months under sterile conditions after opening. Please minimize freeze-thaw cycles.
<b>Reconstitution</b>	Always centrifuge tubes before opening. Do not mix by vortex or pipetting. It is not recommended to reconstitute to a concentration less than 100 $\mu$ g/ml. Dissolve the lyophilized protein in distilled water. Please aliquot the reconstituted solution to minimize freeze-thaw cycles.

## SDS-PAGE image



## Background

**Product Name: Recombinant Human TROP-2 (C-Fc)**  
**Catalog #: PHH1730**



---

**Alternative Names**

Tumor-associated calcium signal transducer 2; Membrane component chromosome 1 surface marker 1; Cell surface glycoprotein Trop-2; TACSTD2; TROP2

**Background**

Tumor associated calcium signal transducer 2 (TACSTD2, TROP-2) is a type I cell surface glycoprotein that is highly expressed on human carcinomas. It was originally identified as an antigen present on human gastrointestinal tumors and is the second of two members of this family. Human and mouse TROP-2 share 87% amino acid (aa) similarity. TROP-2 is capable of transducing an intracellular calcium signal and may play a role in tumor growth. It also has adhesive functions.

**Note**

For Research Use Only , Not for Diagnostic Use.