

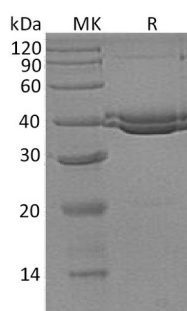
Product Name: Recombinant Human SUMF1 (C-6His)
Catalog #: PHH1579



Summary

Name	Sulfatase Modifying Factor 1/SUMF1
Purity	Greater than 95% as determined by reducing SDS-PAGE
Endotoxin level	<1 EU/μg as determined by LAL test.
Construction	Recombinant Human Sulfatase Modifying Factor 1 is produced by our Mammalian expression system and the target gene encoding Ser34-Asp374 is expressed with a 6His tag at the C-terminus.
Accession #	Q8NBK3
Host	Human Cells
Species	Human
Predicted Molecular Mass	38.4 KDa
Formulation	Supplied as a 0.2 μm filtered solution of 20mM Tris-HCl, 150mM NaCl, 2mM CaCl ₂ , 10% Glycerol, pH 7.5.
Shipping	The product is shipped on dry ice/polar packs. Upon receipt, store it immediately at the temperature listed below.
Stability&Storage	Store at ≤-70°C, stable for 6 months after receipt. Store at ≤-70°C, stable for 3 months under sterile conditions after opening. Please minimize freeze-thaw cycles.
Reconstitution	

SDS-PAGE image



Background

Alternative Names	Sulfatase-Modifying Factor 1; C-Alpha-Formylglycine-Generating Enzyme 1; SUMF1; FGE
Background	Human Sulfatase Modifying Factor 1 (SUMF1) is a 42kDa protein. SUMF1 is a Ca ²⁺ -binding member of the sulfatase-modifying factor family. SUMF1 is a soluble

Product Name: Recombinant Human SUMF1 (C-6His)
Catalog #: PHH1579



ER luminal glycoprotein, it converts inactive sulfatases into an active form by transforming a catalytic site cysteine into a formylglycine residue. In the ER, SUMF1 can exist as either a monomer, or a disulfide-linked homodimer or a heterodimer with SUMF2. Three splice isoforms are known.

Note

For Research Use Only , Not for Diagnostic Use.