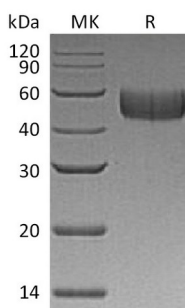


Summary

Name	Signal-regulatory Protein Beta-1/SIRPB1/CD172b
Purity	Greater than 95% as determined by reducing SDS-PAGE
Endotoxin level	<1 EU/μg as determined by LAL test.
Construction	Recombinant Human Signal-regulatory Protein Beta-1 is produced by our Mammalian expression system and the target gene encoding Glu30-Glu362 is expressed with a 6His tag at the C-terminus.
Accession #	O00241
Host	Human Cells
Species	Human
Predicted Molecular Mass	37.4 KDa
Formulation	Lyophilized from a 0.2 μm filtered solution of PBS, pH 7.4.
Shipping	The product is shipped at ambient temperature. Upon receipt, store it immediately at the temperature listed below.
Stability&Storage	Store at ≤-70°C, stable for 6 months after receipt. Store at ≤-70°C, stable for 3 months under sterile conditions after opening. Please minimize freeze-thaw cycles.
Reconstitution	Always centrifuge tubes before opening. Do not mix by vortex or pipetting. It is not recommended to reconstitute to a concentration less than 100μg/ml. Dissolve the lyophilized protein in distilled water. Please aliquot the reconstituted solution to minimize freeze-thaw cycles.

SDS-PAGE image



Background

Product Name: Recombinant Human SIRPB1(C-6His)
Catalog #: PHH1527



Alternative Names

Signal-regulatory protein beta-1; SIRP-beta-1; CD172 antigen-like family member B; CD172b; SIRPB1

Background

Signal-regulatory protein beta-1 (SIRPB1, CD172b) is a member of the signal-regulatory-protein (SIRP) family, and also belongs to the immunoglobulin superfamily. SIRP family members are receptor-type transmembrane glycoproteins known to be involved in the negative regulation of receptor tyrosine kinase-coupled signaling processes. This protein was found to interact with TYROBP/DAP12, a protein bearing immunoreceptor tyrosine-based activation motifs. This protein was also reported to participate in the recruitment of tyrosine kinase SYK.

Note

For Research Use Only , Not for Diagnostic Use.