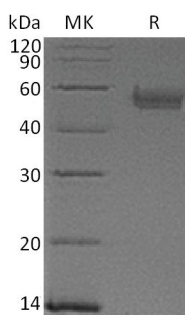


## Summary

<b>Name</b>	Serpin A5/Protein C Inhibitor
<b>Purity</b>	Greater than 95% as determined by reducing SDS-PAGE
<b>Endotoxin level</b>	<1 EU/μg as determined by LAL test.
<b>Construction</b>	Recombinant Human Serine Protease Inhibitor-clade A5 is produced by our Mammalian expression system and the target gene encoding His20-Pro406 is expressed with a 6His tag at the C-terminus.
<b>Accession #</b>	AAH08915.1
<b>Host</b>	Human Cells
<b>Species</b>	Human
<b>Predicted Molecular Mass</b>	44.7 KDa
<b>Formulation</b>	Lyophilized from a 0.2 μm filtered solution of 20mM MES, 150mM NaCl, pH 5.5.
<b>Shipping</b>	The product is shipped at ambient temperature. Upon receipt, store it immediately at the temperature listed below.
<b>Stability&amp;Storage</b>	Store at ≤-70°C, stable for 6 months after receipt. Store at ≤-70°C, stable for 3 months under sterile conditions after opening. Please minimize freeze-thaw cycles.
<b>Reconstitution</b>	Always centrifuge tubes before opening. Do not mix by vortex or pipetting. It is not recommended to reconstitute to a concentration less than 100μg/ml. Dissolve the lyophilized protein in distilled water. Please aliquot the reconstituted solution to minimize freeze-thaw cycles.

## SDS-PAGE image



## Background

**Product Name: Recombinant Human Serpin A5 (C-6His)**  
**Catalog #: PHH1500**



---

**Alternative Names**

Plasma Serine Protease Inhibitor; Acrosomal Serine Protease Inhibitor; Plasminogen Activator Inhibitor 3; PAI-3; PAI3; Protein C Inhibitor; PCI; Serpin A5; SERPINA5; PCI; PLANH3; PROCI

**Background**

Serpin A5 is a member of the human Serpin superfamily consists of at least 35 members. It is synthesized in the liver and has been detected in saliva, cerebral spinal fluid, amniotic fluid, tears and semen. As a potent inhibitor of the protein C anticoagulant pathway at the levels of both zymogen activation and enzyme inhibition, Serpin A5 additionally inhibits a variety of serine protease including thrombin, factor Xa, several kallekreins and acrosin. It plays a critical role in the processes of blood of blood coagulation and fertilization. Serpin A5 also inhibits urinary plasminogen activator (uPA), a mediator of tumor cell invasion, and regulates tumor growth and metastasis by inhibiting angiogenesis. Furthermore, recent studies have identified PCI as a potent and direct inhibitor of activated HGFA (hepatocyte growth factor activator), suggesting a novel function in the regulation of tissue repair and regeneration. Similar to Serpins C1 and D1, the thrombin inhibitory activity of serpinA5 is enhanced by heparin.

**Note**

For Research Use Only , Not for Diagnostic Use.