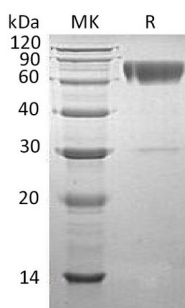


## Summary

<b>Name</b>	Serpin A3/AACT
<b>Purity</b>	Greater than 95% as determined by reducing SDS-PAGE
<b>Endotoxin level</b>	<1 EU/μg as determined by LAL test.
<b>Construction</b>	Recombinant Human Serine Protease Inhibitor-clade A3 is produced by our Mammalian expression system and the target gene encoding His24-Ala423(Lys267Arg) is expressed with a 6His tag at the C-terminus.
<b>Accession #</b>	P01011
<b>Host</b>	Human Cells
<b>Species</b>	Human
<b>Predicted Molecular Mass</b>	46.33 KDa
<b>Formulation</b>	Lyophilized from a 0.2 μm filtered solution of 20mM HEPES, 150mM NaCl, pH 7.5.
<b>Shipping</b>	The product is shipped at ambient temperature. Upon receipt, store it immediately at the temperature listed below.
<b>Stability&amp;Storage</b>	Store at ≤-70°C, stable for 6 months after receipt. Store at ≤-70°C, stable for 3 months under sterile conditions after opening. Please minimize freeze-thaw cycles.
<b>Reconstitution</b>	Always centrifuge tubes before opening. Do not mix by vortex or pipetting. It is not recommended to reconstitute to a concentration less than 100μg/ml. Dissolve the lyophilized protein in distilled water. Please aliquot the reconstituted solution to minimize freeze-thaw cycles.

## SDS-PAGE image



## Background

**Product Name: Recombinant Human Serpin A3 (C-6His)**  
**Catalog #: PHH1499**



---

**Alternative Names**

Alpha-1-Antichymotrypsin; ACT; Cell Growth-Inhibiting Gene 24/25 Protein; Serpin A3; SERPINA3; AACT

**Background**

Serpin A3 belongs to the Serpin superfamily of serine protease inhibitors. Serpin A3 has been shown to inhibit some serine proteases, such as neutrophil cathepsin G and mast cell chymase. Serpin A3 is synthesized initially in the liver and secreted in plasma. Serpin A3 has been found in the amyloid plaques from the hippocampus of Alzheimer disease brains. In addition to, Serpin A3 is associated with liver disease and Parkinson disease and chronic obstructive pulmonary disease.

**Note**

For Research Use Only , Not for Diagnostic Use.