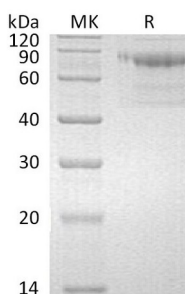


## Summary

<b>Name</b>	Serpin A10/PZI
<b>Purity</b>	Greater than 95% as determined by reducing SDS-PAGE
<b>Endotoxin level</b>	<1 EU/μg as determined by LAL test.
<b>Construction</b>	Recombinant Human Serine Protease Inhibitor-clade A10 is produced by our Mammalian expression system and the target gene encoding Leu22-Leu444 is expressed with a 6His tag at the C-terminus.
<b>Accession #</b>	Q9UK55
<b>Host</b>	Human Cells
<b>Species</b>	Human
<b>Predicted Molecular Mass</b>	49.5 KDa
<b>Formulation</b>	Lyophilized from a 0.2 μm filtered solution of 20mM PB, 150mM NaCl, 1mM CaCl <sub>2</sub> , pH 7.4.
<b>Shipping</b>	The product is shipped at ambient temperature. Upon receipt, store it immediately at the temperature listed below.
<b>Stability&amp;Storage</b>	Store at ≤-70°C, stable for 6 months after receipt. Store at ≤-70°C, stable for 3 months under sterile conditions after opening. Please minimize freeze-thaw cycles.
<b>Reconstitution</b>	Always centrifuge tubes before opening. Do not mix by vortex or pipetting. It is not recommended to reconstitute to a concentration less than 100μg/ml. Dissolve the lyophilized protein in distilled water. Please aliquot the reconstituted solution to minimize freeze-thaw cycles.

## SDS-PAGE image



## Background

**Product Name: Recombinant Human Serpin A10 (C-6His)**  
**Catalog #: PHH1495**

---

**Alternative Names**

Protein Z-Dependent Protease Inhibitor; PZ-Dependent Protease Inhibitor; PZI; Serpin A10; SERPINA10; ZPI

**Background**

Serpin A10 is a secreted protein that belongs to the serpin family. It is predominantly expressed in the liver and secreted in the plasma. Its phosphorylation sites are present in the extracellular medium. It inhibits factors Xa and XIa of the coagulation cascade in the presence of protein Z, calcium, and phospholipid. Mutations in SERPINA10 are associated with venous thrombosis.

**Note**

For Research Use Only , Not for Diagnostic Use.