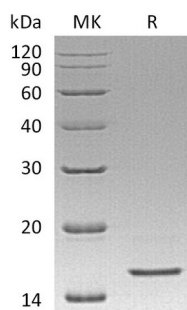


## Summary

<b>Name</b>	REG4/GISP/RELP/Regenerating islet-derived protein 4
<b>Purity</b>	Greater than 95% as determined by reducing SDS-PAGE
<b>Endotoxin level</b>	<1 EU/μg as determined by LAL test.
<b>Construction</b>	Recombinant Human Regenerating Islet-derived Protein 4 is produced by our Mammalian expression system and the target gene encoding Asp23-Pro158 is expressed with a 6His tag at the C-terminus.
<b>Accession #</b>	Q9BYZ8
<b>Host</b>	Human Cells
<b>Species</b>	Human
<b>Predicted Molecular Mass</b>	19.2 KDa
<b>Formulation</b>	Lyophilized from a 0.2 μm filtered solution of 20 mM HIS-HCl, 5% Sucrose, 5% Mannitol, 0.05% Tween 80, pH6.0.
<b>Shipping</b>	The product is shipped at ambient temperature. Upon receipt, store it immediately at the temperature listed below.
<b>Stability&amp;Storage</b>	Store at ≤-70°C, stable for 6 months after receipt. Store at ≤-70°C, stable for 3 months under sterile conditions after opening. Please minimize freeze-thaw cycles.
<b>Reconstitution</b>	Always centrifuge tubes before opening. Do not mix by vortex or pipetting. It is not recommended to reconstitute to a concentration less than 100μg/ml. Dissolve the lyophilized protein in distilled water. Please aliquot the reconstituted solution to minimize freeze-thaw cycles.

## SDS-PAGE image



## Background

**Product Name: Recombinant Human REG4 (C-6His)**  
**Catalog #: PHH1422**



---

**Alternative Names**

Regenerating islet-derived protein 4; Gastrointestinal secretory protein; REG-like protein; Regenerating islet-derived protein IV; GISP; RELP; REG4

**Background**

REG4 is a secreted protein that contains one C-type lectin domain, highly expressed in the gastrointestinal tract, including jejunum, ileum, appendix, pancreas and small intestine. REG4 can be up-regulated by mucosal injury from active Crohn's disease or ulcerative colitis. In the acid environment, REG4 can maintain carbohydrate recognition activity. REG4 may be involved in inflammatory and metaplastic response of the gastrointestinal epithelium.

**Note**

For Research Use Only , Not for Diagnostic Use.