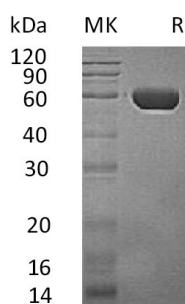


Summary

Name	Probable serine carboxypeptidase CPVL
Purity	Greater than 95% as determined by reducing SDS-PAGE
Endotoxin level	<1 EU/μg as determined by LAL test.
Construction	Recombinant Human Vitellogenic Carboxypeptidase-like Protein is produced by our Mammalian expression system and the target gene encoding Leu23-Gly476 is expressed with a 6His tag at the C-terminus.
Accession #	AAH16838.1
Host	Human Cells
Species	Human
Predicted Molecular Mass	52.9 KDa
Formulation	Supplied as a 0.2 μm filtered solution of 20mM Tris-HCl, 150mM NaCl, 10% Glycerol, pH 7.5.
Shipping	The product is shipped on dry ice/polar packs. Upon receipt, store it immediately at the temperature listed below.
Stability&Storage	Store at ≤-70°C, stable for 6 months after receipt. Store at ≤-70°C, stable for 3 months under sterile conditions after opening. Please minimize freeze-thaw cycles.
Reconstitution	

SDS-PAGE image



Background

Alternative Names	Probable serine carboxypeptidase CPVL; Carboxypeptidase vitellogenic-like; Vitellogenic carboxypeptidase-like protein; VCP-like protein; CPVL
Background	Probable serine carboxypeptidase CPVL, also known as Carboxypeptidase, vitellogenic-like, Vitellogenic carboxypeptidase-like protein, is a member of the

Product Name: Recombinant Human CPVL (C-6His)
Catalog #: PHH1369



peptidase S10 family. It is expressed in macrophages but not in other leukocytes. And specifically, it is abundantly expressed in heart and kidney, also expressed in spleen, leukocytes, and placenta. This enzyme may be involved in the digestion of phagocytosed particles in the lysosome, and also participation in an inflammatory protease cascade, and trimming of peptides for antigen presentation.

Note

For Research Use Only , Not for Diagnostic Use.