

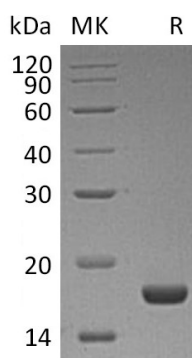
Product Name: Recombinant Human PLA2G1B (C-6His)
Catalog #: PHH1333



Summary

Name	PLA2G1B/Phospholipase A2/PLA2/PLA2A/PPLA2
Purity	Greater than 95% as determined by reducing SDS-PAGE
Endotoxin level	<1 EU/μg as determined by LAL test.
Construction	Recombinant Human Phospholipase A2 Group IB is produced by our Mammalian expression system and the target gene encoding Ala23-Ser148 is expressed with a 6His tag at the C-terminus.
Accession #	P04054
Host	Human Cells
Species	Human
Predicted Molecular Mass	15.2 KDa
Formulation	Supplied as a 0.2 μm filtered solution of 20mM Tris-HCl, 150mM NaCl, 10% Glycerol, pH 8.0.
Shipping	The product is shipped on dry ice/polar packs. Upon receipt, store it immediately at the temperature listed below.
Stability&Storage	Store at ≤-70°C, stable for 6 months after receipt. Store at ≤-70°C, stable for 3 months under sterile conditions after opening. Please minimize freeze-thaw cycles.
Reconstitution	

SDS-PAGE image



Background

Alternative Names PLA2G1B;Phospholipase A2;Group IB phospholipase A2;PLA2;PLA2A;PPLA2

Background Phospholipase A2(PLA2G1B) is a secreted protein which belongs to the

Product Name: Recombinant Human PLA2G1B (C-6His)
Catalog #: PHH1333



phospholipase A2 family. It catalyzes the release of fatty acids from glycerol-3-phosphocholines. It catalyzes the calcium-dependent hydrolysis of the 2-acyl groups in 3-sn-phosphoglycerides. This releases glycerophospholipids and arachidonic acid that serve as the precursors of signal molecules. Sequences of pancreatic PLA2G1B enzymes from a variety of mammals have been reported. One striking feature of these enzymes is their close homology to venom phospholipases of snakes. Mice lacking in PLA2G1B are resistant to obesity and diabetes induced by feeding a diabetogenic high-fat/high-carbohydrate diet. Oral supplementation of a diabetogenic diet with the PLA2G1B inhibitor methyl indoxam effectively suppresses diet-induced obesity and diabetes. PLA2G1B inhibition may be a potentially effective oral therapeutic option for treatment of obesity and diabetes.

Note

For Research Use Only , Not for Diagnostic Use.