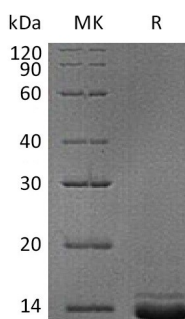


Summary

Name	Neuropeptide Y/NPY
Purity	Greater than 95% as determined by reducing SDS-PAGE
Endotoxin level	<1 EU/μg as determined by LAL test.
Construction	Recombinant Human Pro-Neuropeptide Y is produced by our Mammalian expression system and the target gene encoding Tyr29-Trp97 is expressed with a 6His tag at the C-terminus.
Accession #	P01303
Host	Human Cells
Species	Human
Predicted Molecular Mass	9.1 KDa
Formulation	Lyophilized from a 0.2 μm filtered solution of 20mM PB, 150m MNaCl, pH 7.4
Shipping	The product is shipped at ambient temperature. Upon receipt, store it immediately at the temperature listed below.
Stability&Storage	Store at ≤-70°C, stable for 6 months after receipt. Store at ≤-70°C, stable for 3 months under sterile conditions after opening. Please minimize freeze-thaw cycles.
Reconstitution	Always centrifuge tubes before opening. Do not mix by vortex or pipetting. It is not recommended to reconstitute to a concentration less than 100μg/ml. Dissolve the lyophilized protein in distilled water. Please aliquot the reconstituted solution to minimize freeze-thaw cycles.

SDS-PAGE image



Background

Product Name: Recombinant Human NPY (C-6His)
Catalog #: PHH1215



Alternative Names

Pro-Neuropeptide Y; Neuropeptide Y; Neuropeptide Tyrosine; NPY; C-Flanking Peptide of NPY; CPON; NPY

Background

Pro-Neuropeptide Y (NPY) is a member of the NPY family. NPY is a secreted protein and is one of the most abundant peptides in the nervous system. It also can be found in some chromaffin cells of the adrenal medulla. NPY can be cleaved into Neuropeptide Y and C-flanking peptide of NPY chain, which regulates energy usage, and it is involved in learning, memory processing, and epilepsy. NPY is implicated in the control of feeding and in secretion of gonadotrophin-release hormone. In addition, NPY increases the proportion of energy stored as fat and blocks nociceptive signals to the brain.

Note

For Research Use Only , Not for Diagnostic Use.