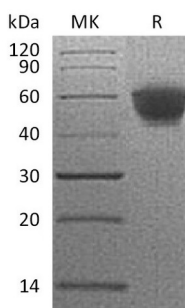


## Summary

<b>Name</b>	NKG2D/CD314/Natural Killer G2D/KLRK1
<b>Purity</b>	Greater than 95% as determined by reducing SDS-PAGE
<b>Endotoxin level</b>	<1 EU/μg as determined by LAL test.
<b>Construction</b>	Recombinant Human Natural Killer G2D is produced by our Mammalian expression system and the target gene encoding Phe78-Val216 is expressed with a human IgG1 Fc tag at the N-terminus.
<b>Accession #</b>	P26718
<b>Host</b>	Human Cells
<b>Species</b>	Human
<b>Predicted Molecular Mass</b>	42.4 KDa
<b>Formulation</b>	Lyophilized from a 0.2 μm filtered solution of PBS, pH 7.4.
<b>Shipping</b>	The product is shipped at ambient temperature. Upon receipt, store it immediately at the temperature listed below.
<b>Stability&amp;Storage</b>	Store at ≤-70°C, stable for 6 months after receipt. Store at ≤-70°C, stable for 3 months under sterile conditions after opening. Please minimize freeze-thaw cycles.
<b>Reconstitution</b>	Always centrifuge tubes before opening. Do not mix by vortex or pipetting. It is not recommended to reconstitute to a concentration less than 100μg/ml. Dissolve the lyophilized protein in distilled water. Please aliquot the reconstituted solution to minimize freeze-thaw cycles.

## SDS-PAGE image



## Background

**Product Name: Recombinant Human NKG2D (N-Fc)**  
**Catalog #: PHH1196**



---

**Alternative Names**

NKG2-D type II integral membrane protein; KLRK1

**Background**

NKG2-D type II integral membrane protein (NKG2D) is a type II transmembrane glycoprotein which belongs to the CD94/NKG2 family. NKG2D is expressed on natural killer (NK) cells, CD8+ alpha-beta and gamma-delta T-cells. As an activating and costimulatory receptor, it involved in immunosurveillance upon binding to various cellular stress-inducible ligands displayed at the surface of autologous tumor cells and virus-infected cells. It provides both stimulatory and costimulatory innate immune responses on activated killer (NK) cells, leading to cytotoxic activity. It stimulates perforin-mediated elimination of ligand-expressing tumor cells. Signaling involves calcium influx, culminating in the expression of TNF-alpha. NKG2D participates in NK cell-mediated bone marrow graft rejection and survival of NK cells. It Binds to ligands belonging to various subfamilies of MHC class I-related glycoproteins including MICA, MICB, RAET1E, RAET1G, ULBP1, ULBP2, ULBP3 (ULBP2//u003EULBP1//u003EULBP3) and ULBP4.

**Note**

For Research Use Only , Not for Diagnostic Use.