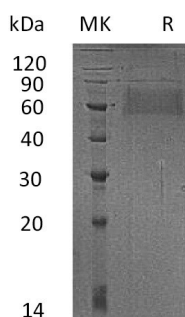


## Summary

<b>Name</b>	L-Selectin/SELL/CD62L
<b>Purity</b>	Greater than 95% as determined by reducing SDS-PAGE
<b>Endotoxin level</b>	<1 EU/μg as determined by LAL test.
<b>Construction</b>	Recombinant Human L-selectin /sell is produced by our Mammalian expression system and the target gene encoding Trp39-Asn332 is expressed with a 6His tag at the C-terminus.
<b>Accession #</b>	P14151
<b>Host</b>	Human Cells
<b>Species</b>	Human
<b>Predicted Molecular Mass</b>	34 KDa
<b>Formulation</b>	Lyophilized from a 0.2 μm filtered solution of PBS, pH7.4.
<b>Shipping</b>	The product is shipped at ambient temperature. Upon receipt, store it immediately at the temperature listed below.
<b>Stability&amp;Storage</b>	Store at ≤-70°C, stable for 6 months after receipt. Store at ≤-70°C, stable for 3 months under sterile conditions after opening. Please minimize freeze-thaw cycles.
<b>Reconstitution</b>	Always centrifuge tubes before opening. Do not mix by vortex or pipetting. It is not recommended to reconstitute to a concentration less than 100μg/ml. Dissolve the lyophilized protein in distilled water. Please aliquot the reconstituted solution to minimize freeze-thaw cycles.

## SDS-PAGE image



## Background

**Product Name: Recombinant Human L-Selectin (C-6His)**  
**Catalog #: PHH1104**



---

**Alternative Names**

L-selectin (SELL); CD62 antigen-like family member L; Leukocyte adhesion molecule 1; Leukocyte surface antigen Leu-8; Leukocyte-endothelial cell adhesion molecule 1; Lymph node homing receptor; TQ1; gp90-MEL; LNHR and LYAM1

**Background**

SELL contains one C-type lectin domain, one EGF-like domain and two Sushi (CCP/SCR) domains. SELL is expressed in B-cell lines and T-lymphocytes. SELL functions as a cell surface adhesion protein and mediates the adherence of lymphocytes to endothelial cells of high endothelial venules in peripheral lymph nodes. In addition, SELL also promotes initial tethering and rolling of leukocytes in endothelia.

**Note**

For Research Use Only , Not for Diagnostic Use.