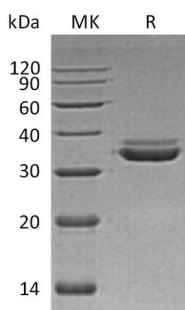


## Summary

<b>Name</b>	LMAN2L/VIP36-like protein
<b>Purity</b>	Greater than 95% as determined by reducing SDS-PAGE
<b>Endotoxin level</b>	<1 EU/μg as determined by LAL test.
<b>Construction</b>	Recombinant Human VIP36-like Protein is produced by our Mammalian expression system and the target gene encoding Ser19-Ala313 is expressed with a 6His tag at the C-terminus.
<b>Accession #</b>	Q9H0V9
<b>Host</b>	Human Cells
<b>Species</b>	Human
<b>Predicted Molecular Mass</b>	34.4 KDa
<b>Formulation</b>	Lyophilized from a 0.2 μm filtered solution of 20mM PB, 150mM NaCl, pH 7.2.
<b>Shipping</b>	The product is shipped at ambient temperature. Upon receipt, store it immediately at the temperature listed below.
<b>Stability&amp;Storage</b>	Store at ≤-70°C, stable for 6 months after receipt. Store at ≤-70°C, stable for 3 months under sterile conditions after opening. Please minimize freeze-thaw cycles.
<b>Reconstitution</b>	Always centrifuge tubes before opening. Do not mix by vortex or pipetting. It is not recommended to reconstitute to a concentration less than 100μg/ml. Dissolve the lyophilized protein in distilled water. Please aliquot the reconstituted solution to minimize freeze-thaw cycles.

## SDS-PAGE image



## Background

**Product Name: Recombinant Human LMAN2L (C-6His)**  
**Catalog #: PHH1092**



---

**Alternative Names**

VIP36-like protein;Lectin mannose-binding 2-like;LMAN2-like protein;VIPL

**Background**

VIP36-like protein (LMAN2L) is a single-pass type I membrane protein and contains 1 L-type lectin-like domain. It is highly expressed in skeletal muscle and kidney, and its intermediate expression levels in heart, liver and placenta, low levels in brain, thymus, spleen, small intestine and lung. LMAN2L may be involved in the regulation of export from the endoplasmic reticulum of a subset of glycoproteins. It also may function as a regulator of ERGIC-53.

**Note**

For Research Use Only , Not for Diagnostic Use.