

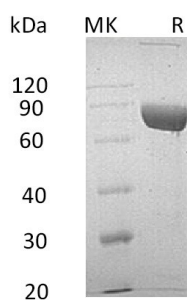
Product Name: Recombinant Human LRG1 (C-Fc-6His)
Catalog #: PHH1078



Summary

Name	Leucine-rich alpha-2-glycoprotein/LRG1
Purity	Greater than 95% as determined by reducing SDS-PAGE
Endotoxin level	<1 EU/μg as determined by LAL test.
Construction	Recombinant Human Leucine-rich Alpha-2-glycoprotein is produced by our Mammalian expression system and the target gene encoding Val36-Gln347 is expressed with a human IgG1 Fc, 6His tag at the C-terminus.
Accession #	AAH70198.1
Host	Human Cells
Species	Human
Predicted Molecular Mass	62.3 KDa
Formulation	Supplied as a 0.2 μm filtered solution of 20mM Tris-HCl, 200mM NaCl, 10% Glycerol, pH 8.0.
Shipping	The product is shipped on dry ice/polar packs. Upon receipt, store it immediately at the temperature listed below.
Stability&Storage	Store at ≤-70°C, stable for 6 months after receipt. Store at ≤-70°C, stable for 3 months under sterile conditions after opening. Please minimize freeze-thaw cycles.
Reconstitution	

SDS-PAGE image



Background

Alternative Names Leucine-rich alpha-2-glycoprotein; LRG and LRG1

Background LRG1 is a secreted protein and contains eight LRR repeats and one LRRCT domain. It can be expressed during granulocyte differentiation. LRG1 has been shown to be involved in protein-protein interaction, signal transduction, cell adhesion and

Product Name: Recombinant Human LRG1 (C-Fc-6His)
Catalog #: PHH1078



development. Levels of the LRG protein are markedly elevated in acute appendicitis and therefore could be used as a diagnostic aid.

Note

For Research Use Only , Not for Diagnostic Use.