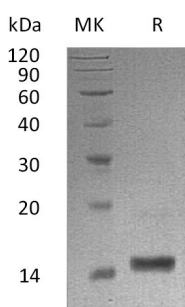


Summary

Name	LALBA/LYZL7/Alpha-lactalbumin
Purity	Greater than 95% as determined by reducing SDS-PAGE
Endotoxin level	<1 EU/μg as determined by LAL test.
Construction	Recombinant Human Alpha-lactalbumin is produced by our Mammalian expression system and the target gene encoding Lys20-Leu142 is expressed with a 6His tag at the C-terminus.
Accession #	P00709
Host	Human Cells
Species	Human
Predicted Molecular Mass	15.1 KDa
Formulation	Supplied as a 0.2 μm filtered solution of 20mM Tris-HCl, 150mM NaCl, pH 8.0.
Shipping	The product is shipped on dry ice/polar packs. Upon receipt, store it immediately at the temperature listed below.
Stability&Storage	Store at ≤-70°C, stable for 6 months after receipt. Store at ≤-70°C, stable for 3 months under sterile conditions after opening. Please minimize freeze-thaw cycles.
Reconstitution	

SDS-PAGE image



Background

Alternative Names Lactose synthase B protein; Lysozyme-like protein 7; LALBA; LYZL7

Background Alpha-lactalbumin(LALBA) is a secreted protein that is a member of the glycosyl hydrolase 22 family.It is expressed in mammary gland in milk. It is the regulatory

Product Name: Recombinant Human LALBA (C-6His)
Catalog #: PHH1063



subunit of lactose synthase. It changes the substrate specificity of galactosyltransferase in the mammary gland making glucose a good acceptor substrate for this enzyme.

Note

For Research Use Only , Not for Diagnostic Use.