

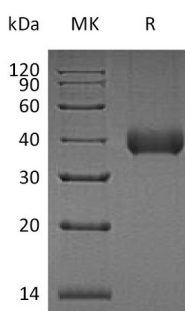
**Product Name: Recombinant Human KLK11 (C-6His)**  
**Catalog #: PHH1031**



## Summary

<b>Name</b>	Kallikrein 11/KLK11
<b>Purity</b>	Greater than 95% as determined by reducing SDS-PAGE
<b>Endotoxin level</b>	<1 EU/μg as determined by LAL test.
<b>Construction</b>	Recombinant Human Kallikrein 11 is produced by our Mammalian expression system and the target gene encoding Glu19-Asn250 is expressed with a 6His tag at the C-terminus.
<b>Accession #</b>	AAH22068
<b>Host</b>	Human Cells
<b>Species</b>	Human
<b>Predicted Molecular Mass</b>	26.28 KDa
<b>Formulation</b>	Supplied as a 0.2 μm filtered solution of 20mM Tris-HCl, 150mM NaCl, 2mM CaCl <sub>2</sub> , pH 8.0.
<b>Shipping</b>	The product is shipped on dry ice/polar packs. Upon receipt, store it immediately at the temperature listed below.
<b>Stability&amp;Storage</b>	Store at ≤-70°C, stable for 6 months after receipt. Store at ≤-70°C, stable for 3 months under sterile conditions after opening. Please minimize freeze-thaw cycles.
<b>Reconstitution</b>	

## SDS-PAGE image



## Background

<b>Alternative Names</b>	Kallikrein-11; hK11; Hippostasin; Serine Protease 20; Trypsin-Like Protease; KLK11; PRSS20; TLSP
<b>Background</b>	Human Kallikrein 11 (KLK11) is a member of tissue kallikrein family which are extracellular serine proteases consisting of 15 members. Two isoforms of KLK11 are

**Product Name: Recombinant Human KLK11 (C-6His)**  
**Catalog #: PHH1031**



---

differentially expressed. Isoform 1 is predominantly expressed in brain and isoform 2 is preferentially expressed in prostate. Isoform 1 consists of a signal peptide, a short pro peptide and the mature chain. Isoform 2 contains an extra 32 amino acid N terminal to full-length isoform 1. KLK11 is a novel marker for ovarian and prostate cancer carcinomas. KLK11 can be activated by thermolysin and is active against a thioester substrate.

### **Note**

For Research Use Only , Not for Diagnostic Use.