

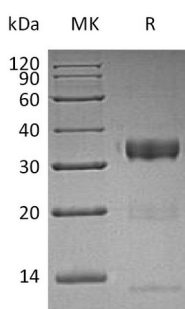
**Product Name: Recombinant Human KLK10 (C-6His)**  
**Catalog #: PHH1030**



## Summary

<b>Name</b>	Kallikrein 10/KLK10
<b>Purity</b>	Greater than 95% as determined by reducing SDS-PAGE
<b>Endotoxin level</b>	<1 EU/μg as determined by LAL test.
<b>Construction</b>	Recombinant Human Kallikrein 10 is produced by our Mammalian expression system and the target gene encoding Ala31-Asn276 is expressed with a 6His tag at the C-terminus.
<b>Accession #</b>	AAH02710.1
<b>Host</b>	Human Cells
<b>Species</b>	Human
<b>Predicted Molecular Mass</b>	27.98 KDa
<b>Formulation</b>	Supplied as a 0.2 μm filtered solution of 20mM Tris-HCl, 150mM NaCl, pH 8.0.
<b>Shipping</b>	The product is shipped on dry ice/polar packs. Upon receipt, store it immediately at the temperature listed below.
<b>Stability&amp;Storage</b>	Store at ≤-70°C, stable for 6 months after receipt. Store at ≤-70°C, stable for 3 months under sterile conditions after opening. Please minimize freeze-thaw cycles.
<b>Reconstitution</b>	

## SDS-PAGE image



## Background

<b>Alternative Names</b>	Kallikrein-10; Normal Epithelial Cell-Specific 1; Protease Serine-Like 1; KLK10; NES1; PRSSL1
<b>Background</b>	Kallikreins are a subgroup of Serine Proteases having diverse physiological functions. Growing evidence suggests that many Kallikreins are implicated in

**Product Name: Recombinant Human KLK10 (C-6His)**  
**Catalog #: PHH1030**



---

carcinogenesis and some have potential as novel cancer and other disease biomarkers. This gene is one of the fifteen Kallikrein subfamily members located in a cluster on chromosome 19. Its encoded protein is secreted and may play a role in suppression of tumorigenesis in breast and prostate cancers. Alternate splicing of this gene results in multiple transcript variants encoding the same protein.

### **Note**

For Research Use Only , Not for Diagnostic Use.