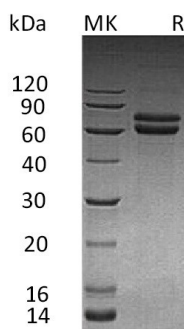


Summary

Name	JAM-B/VE-JAM
Purity	Greater than 95% as determined by reducing SDS-PAGE
Endotoxin level	<1 EU/μg as determined by LAL test.
Construction	Recombinant Human Junctional Adhesion Molecule B is produced by our Mammalian expression system and the target gene encoding Phe29-Asn236 is expressed with a human IgG1 Fc tag at the C-terminus.
Accession #	P57087
Host	Human Cells
Species	Human
Predicted Molecular Mass	50.4 KDa
Formulation	Lyophilized from a 0.2 μm filtered solution of PBS, pH 7.4.
Shipping	The product is shipped at ambient temperature. Upon receipt, store it immediately at the temperature listed below.
Stability&Storage	Store at ≤-70°C, stable for 6 months after receipt. Store at ≤-70°C, stable for 3 months under sterile conditions after opening. Please minimize freeze-thaw cycles.
Reconstitution	Always centrifuge tubes before opening. Do not mix by vortex or pipetting. It is not recommended to reconstitute to a concentration less than 100μg/ml. Dissolve the lyophilized protein in distilled water. Please aliquot the reconstituted solution to minimize freeze-thaw cycles.

SDS-PAGE image



Background

Product Name: Recombinant Human JAM-B (C-Fc)
Catalog #: PHH1027



Alternative Names

Junctional Adhesion Molecule B; JAM-B; Junctional Adhesion Molecule 2; JAM-2; Vascular Endothelial Junction-Associated Molecule; VE-JAM; CD322; JAM2; C21orf43; VEJAM

Background

Junctional Adhesion Molecule B (JAM-B) is a single-pass type I membrane protein that belongs to the junctional adhesion molecules family. JAM-B includes a signal sequence (aa 1-28), an extracellular region (aa 29-238) with one Ig-like C2-type domain and one Ig-like V-type domain, a transmembrane segment (aa 239-259), and a cytoplasmic domain (aa 260 - 298). JAMB is localized to the tight junctions between endothelial cells or epithelial cells. JAM-B is prominently expressed in the heart, placenta, lung, foreskin and lymph node. It is also present on the endothelia of other vessels. JAM-B acts as an adhesive ligand for interacting with a variety of immune cell types and may play a role in lymphocyte homing to secondary lymphoid organs.

Note

For Research Use Only , Not for Diagnostic Use.