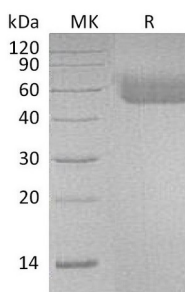


## Summary

<b>Name</b>	IL-1RI/Interleukin-1 receptor type 1/IL-1R-1
<b>Purity</b>	Greater than 95% as determined by reducing SDS-PAGE
<b>Endotoxin level</b>	<1 EU/μg as determined by LAL test.
<b>Construction</b>	Recombinant Human Interleukin-1 Receptor Type 1/IL-1R-1 is produced by our Mammalian expression system and the target gene encoding Leu18-Thr332 is expressed with a 6His tag at the C-terminus.
<b>Accession #</b>	P14778
<b>Host</b>	Human Cells
<b>Species</b>	Human
<b>Predicted Molecular Mass</b>	37 KDa
<b>Formulation</b>	Lyophilized from a 0.2 μm filtered solution of PBS, pH 7.4.
<b>Shipping</b>	The product is shipped at ambient temperature. Upon receipt, store it immediately at the temperature listed below.
<b>Stability&amp;Storage</b>	Store at ≤-70°C, stable for 6 months after receipt. Store at ≤-70°C, stable for 3 months under sterile conditions after opening. Please minimize freeze-thaw cycles.
<b>Reconstitution</b>	Always centrifuge tubes before opening. Do not mix by vortex or pipetting. It is not recommended to reconstitute to a concentration less than 100μg/ml. Dissolve the lyophilized protein in distilled water. Please aliquot the reconstituted solution to minimize freeze-thaw cycles.

## SDS-PAGE image



## Background

**Product Name: Recombinant Human IL-1R1 (C-6His)**  
**Catalog #: PHH0973**



---

**Alternative Names**

Interleukin-1 receptor type 1; IL-1R-1; IL-1RT-1; IL-1RT1; CD121 antigen-like family member A; Interleukin-1 receptor alpha; IL-1R-alpha; p80; CD121a

**Background**

Interleukin 1 receptor, type I (IL-1R1) is an interleukin receptor that belongs to the interleukin-1 receptor family. IL-1R1 is an 80 kDa transmembrane protein that is expressed predominantly by T cells, fibroblasts, and endothelial cells. This gene along with IL1R2, IL1RL2, and IL1RL1 form a cytokine receptor gene cluster in a region mapped to chromosome 2q12. IL-1R1 is an important mediator involved in many cytokine induced immune and inflammatory responses. It binds to interleukin-1 associates with the coreceptor IL1RAP to form the high affinity interleukin-1 receptor complex which mediates interleukin-1-dependent activation of NF-kappa-B, MAPK and other pathways. The signaling involves the recruitment of adapter molecules such as TOLLIP, MYD88, and IRAK1 or IRAK2 via the respective TIR domains of the receptor/coreceptor subunits. It also binds ligands with comparable affinity and binding of antagonist IL1RN prevents association with IL1RAP to form a signaling complex. An IL1 receptor accessory protein that can heterodimerize with the Type I receptor in the presence of IL1 $\alpha$  or IL1 $\beta$  but not IL1ra, was identified. Recombinant IL1 soluble receptor Type I is a potent antagonist of IL1 action.

**Note**

For Research Use Only , Not for Diagnostic Use.