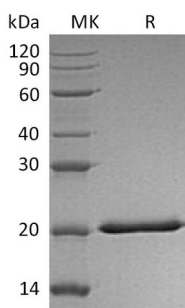


## Summary

<b>Name</b>	IFN- $\lambda$ 2/IL-28A/Interferon Lambda-2
<b>Purity</b>	Greater than 95% as determined by reducing SDS-PAGE
<b>Endotoxin level</b>	<1 EU/ $\mu$ g as determined by LAL test.
<b>Construction</b>	Recombinant Human Interferon Lambda-2 is produced by our Mammalian expression system and the target gene encoding Val26-Val200 is expressed with a 6His tag at the C-terminus.
<b>Accession #</b>	Q8IZJ0
<b>Host</b>	Human Cells
<b>Species</b>	Human
<b>Predicted Molecular Mass</b>	20.6 KDa
<b>Formulation</b>	Lyophilized from a 0.2 $\mu$ m filtered solution of PBS, pH 7.4.
<b>Shipping</b>	The product is shipped at ambient temperature. Upon receipt, store it immediately at the temperature listed below.
<b>Stability&amp;Storage</b>	Lyophilized protein should be stored at $\leq -20^{\circ}\text{C}$ , stable for one year after receipt. Reconstituted protein solution can be stored at 2-8 $^{\circ}\text{C}$ for 2-7 days. Aliquots of reconstituted samples are stable at $\leq -20^{\circ}\text{C}$ for 3 months.
<b>Reconstitution</b>	Always centrifuge tubes before opening. Do not mix by vortex or pipetting. It is not recommended to reconstitute to a concentration less than 100 $\mu$ g/ml. Dissolve the lyophilized protein in distilled water. Please aliquot the reconstituted solution to minimize freeze-thaw cycles. Always centrifuge tubes before opening. Do not mix by vortex or pipetting. It is not recommended to reconstitute to a concentration less than 100 $\mu$ g/ml. Dissolve the lyophilized protein in distilled water. Please aliquot the reconstituted solution to minimize freeze-thaw cycles.

## SDS-PAGE image



## Background

**Product Name: Recombinant Human IL-28A (C-6His)**  
**Catalog #: PHH0965**



---

**Alternative Names**

Interferon lambda-2; IFN-lambda-2; Cytokine Zcyto20; Interleukin-28A; IL-28A; IFNL2; IL28A; ZCYTO20

**Background**

IL-28A (Interferon- $\lambda$ 2; IFN- $\lambda$ 2), IL-28B/IFN- $\lambda$ 3, and IL-29/IFN- $\lambda$ 1 are type III interferons which are distantly related to IL-10 family and type I IFN family cytokines. Mature human IL-28A is an approximately 22-25 kDa protein that shares 66% amino acid (aa) sequence identity with mouse and rat IL-28A and shows cross-species activity. It shares 96% and 70% aa sequence identity with human IL-28B and IL-29, respectively. IL-28A promotes the Th1 polarization of dendritic cells in the airway and inhibits Th2 and Th17 mediated inflammation. IL-28A additionally exhibits anti-tumor activity, in part by enhancing IL-12 dependent anti-tumor CTL responses in vivo. In contrast, it is up-regulated in invasive bladder cancer where it promotes tumor cell migration.

**Note**

For Research Use Only , Not for Diagnostic Use.