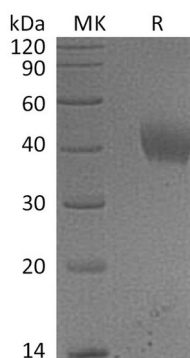


## Summary

<b>Name</b>	IL-20RA
<b>Purity</b>	Greater than 95% as determined by reducing SDS-PAGE
<b>Endotoxin level</b>	<1 EU/μg as determined by LAL test.
<b>Construction</b>	Recombinant Human Interleukin-20 Receptor Subunit Alpha is produced by our Mammalian expression system and the target gene encoding Val30-Lys250 is expressed with a 6His tag at the C-terminus.
<b>Accession #</b>	Q9UHF4
<b>Host</b>	Human Cells
<b>Species</b>	Human
<b>Predicted Molecular Mass</b>	26.3 KDa
<b>Formulation</b>	Lyophilized from a 0.2 μm filtered solution of 20mM PB, 150mM NaCl, pH 7.4.
<b>Shipping</b>	The product is shipped at ambient temperature. Upon receipt, store it immediately at the temperature listed below.
<b>Stability&amp;Storage</b>	Lyophilized protein should be stored at ≤ -20°C, stable for one year after receipt. Reconstituted protein solution can be stored at 2-8°C for 2-7 days. Aliquots of reconstituted samples are stable at ≤ -20°C for 3 months.
<b>Reconstitution</b>	Always centrifuge tubes before opening. Do not mix by vortex or pipetting. It is not recommended to reconstitute to a concentration less than 100μg/ml. Dissolve the lyophilized protein in distilled water. Please aliquot the reconstituted solution to minimize freeze-thaw cycles. Always centrifuge tubes before opening. Do not mix by vortex or pipetting. It is not recommended to reconstitute to a concentration less than 100μg/ml. Dissolve the lyophilized protein in distilled water. Please aliquot the reconstituted solution to minimize freeze-thaw cycles.

## SDS-PAGE image



**Product Name: Recombinant Human IL-20RA (C-6His)**  
**Catalog #: PHH0900**



---

## Background

### Alternative Names

Interleukin-20 Receptor Subunit Alpha; IL-20 Receptor Subunit Alpha; IL-20R-Alpha; IL-20RA; Cytokine Receptor Class-II Member 8; Cytokine Receptor Family 2 Member 8; CRF2-8; IL-20R1; ZcytoR7; IL20RA

### Background

Interleukin-20 Receptor Subunit  $\alpha$  (IL20RA) is a single-pass type I membrane protein that is a member of the type II cytokine receptor family. IL20RA is synthesized as a 553 amino acid glycoprotein precursor containing a 29 amino acid signal peptide, a 221 amino acid extracellular domain with two fibronectin type-III domains, a 24 amino acid transmembrane region, and a 279 amino acid intracellular domain. IL20RA is widely expressed with highest levels found in skin and testis and high levels in brain. IL20RA forms a heterodimer with IL20RB, and the complex serves as a receptor for IL19, IL20 and IL24. IL20RA also forms a heterodimer with the unique and specific receptor IL10RB and functions as the receptor for IL26.

## Note

For Research Use Only , Not for Diagnostic Use.