

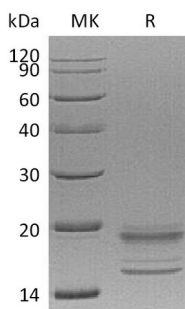
Product Name: Recombinant Human IL-17A&17F (C-6His)
Catalog #: PHH0878



Summary

Name	IL-17A & IL17F Heterodimer
Purity	Greater than 95% as determined by reducing SDS-PAGE
Endotoxin level	<1 EU/μg as determined by LAL test.
Construction	Recombinant Human Interleukin-17A/Interleukin-17F Heterodimer is produced by our Mammalian expression system and the target gene encoding Gly24-Ala155&Arg31-Gln163 is expressed with a 6His tag at the C-terminus.
Accession #	Q16552
Host	Human Cells
Species	Human
Predicted Molecular Mass	15.116 KDa
Formulation	Lyophilized from a 0.2 μm filtered solution of 20mM PB, 150mM NaCl, 1mM EDTA, pH 7.4.
Shipping	The product is shipped at ambient temperature. Upon receipt, store it immediately at the temperature listed below.
Stability&Storage	Store at ≤-70°C, stable for 6 months after receipt. Store at ≤-70°C, stable for 3 months under sterile conditions after opening. Please minimize freeze-thaw cycles.
Reconstitution	Always centrifuge tubes before opening. Do not mix by vortex or pipetting. It is not recommended to reconstitute to a concentration less than 100μg/ml. Dissolve the lyophilized protein in distilled water. Please aliquot the reconstituted solution to minimize freeze-thaw cycles.

SDS-PAGE image



Product Name: Recombinant Human IL-17A&17F (C-6His)
Catalog #: PHH0878



Background

Alternative Names IL-17A/F Heterodimer; IL-17A&IL-17F Heterodimer

Background The IL-17 family include IL-17A, IL-17B, IL-17C, IL-17D, IL-17E (also called IL-25), and IL-17F. The family is comprised of at least six proinflammatory cytokines that share a conserved cysteine-knot structure but diverge at the N-terminus. All members of the IL-17 family have a similar protein structure, with four highly conserved cysteine residues critical to their 3-dimensional shape, yet they have no sequence similarity to any other known cytokines. IL-17 family members are glycoproteins secreted as dimers that induce local cytokine production and recruit granulocytes to sites of inflammation. IL-17 is induced by IL-15 and IL-23, mainly in activated CD4+ T cells distinct from Th1 or Th2 cells. IL-17F is the most homologous to IL-17, but is induced only by IL-23 in activated monocytes.

Note

For Research Use Only , Not for Diagnostic Use.