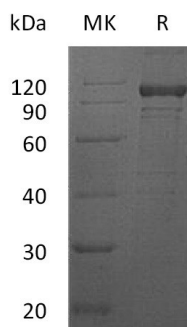


Summary

Name	IL-12RB1/CD212/IL-12 Receptor Subunit Beta1
Purity	Greater than 95% as determined by reducing SDS-PAGE
Endotoxin level	<1 EU/ μ g as determined by LAL test.
Construction	Recombinant Human Interleukin-12 Receptor Subunit Beta-1 is produced by our Mammalian expression system and the target gene encoding Cys24-Glu540 is expressed with a human IgG1 Fc tag at the C-terminus.
Accession #	P42701
Host	Human Cells
Species	Human
Predicted Molecular Mass	84.2 KDa
Formulation	Lyophilized from a 0.2 μ m filtered solution of 20mM Tris-HCl, 5% trehalose, 5% mannitol, 0.02% Tween80, pH8.0.
Shipping	The product is shipped at ambient temperature. Upon receipt, store it immediately at the temperature listed below.
Stability&Storage	Store at \leq -70°C, stable for 6 months after receipt. Store at \leq -70°C, stable for 3 months under sterile conditions after opening. Please minimize freeze-thaw cycles.
Reconstitution	Always centrifuge tubes before opening. Do not mix by vortex or pipetting. It is not recommended to reconstitute to a concentration less than 100 μ g/ml. Dissolve the lyophilized protein in distilled water. Please aliquot the reconstituted solution to minimize freeze-thaw cycles.

SDS-PAGE image



Background

Product Name: Recombinant Human IL-12RB1 (C-Fc)
Catalog #: PHH0864



Alternative Names

CD212; IL12RB1; CD212; CD212 antigen; IL-12 receptor beta component; IL-12 receptor subunit beta-1; IL12R; IL-12R subunit beta-1; IL12RB; IL-12RB1; IL-12R-BETA1; IL-12R-beta-1; interleukin-12 receptor beta-1 chain; interleukin-12 receptor subunit beta-1

Background

Interleukin12 receptor subunit beta 1 (IL12RB1) is a type I transmembrane protein that belongs to the hemopoietin receptor superfamily. IL12RB1 can spontaneously form homodimers and -oligomers, which are able to bind IL12 with only low affinity. IL12 high affinity receptor complex is composed of two subunits designated IL12RB1 and IL12RB2. While IL12RB1 interacts with the IL-12p40 subunit, IL-12p35 is mainly connecting with IL12RB2. This receptor chain is also responsible for transmitting the IL12 signal into the cell. IL12RB1, to the contrary, is also part of the IL23R, where it interacts with the p40 subunit of IL23. IL12RB1 is expressed in activated T cells, NK cells and B cells.

Note

For Research Use Only , Not for Diagnostic Use.