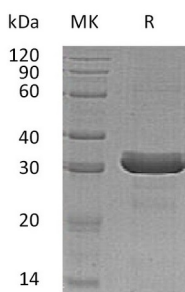


Summary

Name	HDGF2/HRP-3/HDGFRP3/Hepatoma-derived growth factor 2
Purity	Greater than 95% as determined by reducing SDS-PAGE
Endotoxin level	<1 EU/μg as determined by LAL test.
Construction	Recombinant Human Hepatoma-Derived Growth Factor-Related Protein 3 is produced by our Mammalian expression system and the target gene encoding Met1-Thr203 is expressed with a 6His tag at the C-terminus.
Accession #	Q9Y3E1
Host	Human Cells
Species	Human
Predicted Molecular Mass	23.6 KDa
Formulation	Lyophilized from a 0.2 μm filtered solution of 20mM MES, 150mM NaCl, pH 5.5.
Shipping	The product is shipped at ambient temperature. Upon receipt, store it immediately at the temperature listed below.
Stability&Storage	Lyophilized protein should be stored at ≤ -20°C, stable for one year after receipt. Reconstituted protein solution can be stored at 2-8°C for 2-7 days. Aliquots of reconstituted samples are stable at ≤ -20°C for 3 months.
Reconstitution	Always centrifuge tubes before opening. Do not mix by vortex or pipetting. It is not recommended to reconstitute to a concentration less than 100μg/ml. Dissolve the lyophilized protein in distilled water. Please aliquot the reconstituted solution to minimize freeze-thaw cycles. Always centrifuge tubes before opening. Do not mix by vortex or pipetting. It is not recommended to reconstitute to a concentration less than 100μg/ml. Dissolve the lyophilized protein in distilled water. Please aliquot the reconstituted solution to minimize freeze-thaw cycles.

SDS-PAGE image



Background

Product Name: Recombinant Human HDGFRP3 (C-6His)
Catalog #: PHH0776



Alternative Names

Hepatoma-Derived Growth Factor-Related Protein 3; HRP-3; Hepatoma-Derived Growth Factor 2; HDGF-2; HDGFRP3; HDGF2

Background

Hepatoma-Derived Growth Factor-Related Protein 3 (HDGFRP3) belongs to the HDGF family. HDGFRP3 can be found in testis, heart, spinal cord and brain. HDGFRP3 localizes to the nucleus and contains one PWWP domain. HDGFRP3 enhances DNA synthesis and may have a role in cell proliferation.

Note

For Research Use Only , Not for Diagnostic Use.