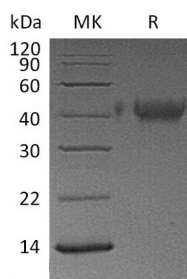


Summary

Name	TIM-3/HAVCR2/TIMD3/T Cell Immunoglobulin and Mucin Domain-3
Purity	Greater than 95% as determined by reducing SDS-PAGE
Endotoxin level	<1 EU/μg as determined by LAL test.
Construction	Recombinant Human T-Cell Membrane Protein 3 is produced by our Mammalian expression system and the target gene encoding Ser22-Arg200 is expressed with a 6His tag at the C-terminus.
Accession #	AAL65157.1
Host	Human Cells
Species	Human
Predicted Molecular Mass	20.86 KDa
Formulation	Lyophilized from a 0.2 μm filtered solution of 20mM PB, 150mM NaCl, pH 7.4.
Shipping	The product is shipped at ambient temperature. Upon receipt, store it immediately at the temperature listed below.
Stability&Storage	Store at ≤-70°C, stable for 6 months after receipt. Store at ≤-70°C, stable for 3 months under sterile conditions after opening. Please minimize freeze-thaw cycles.
Reconstitution	Always centrifuge tubes before opening. Do not mix by vortex or pipetting. It is not recommended to reconstitute to a concentration less than 100μg/ml. Dissolve the lyophilized protein in distilled water. Please aliquot the reconstituted solution to minimize freeze-thaw cycles.

SDS-PAGE image



Background

Product Name: Recombinant Human TIM-3 (C-6His)
Catalog #: PHH0772



Alternative Names

Hepatitis A Virus Cellular Receptor 2; HAVcr-2; T-Cell Immunoglobulin and Mucin Domain-Containing Protein 3; TIMD-3; T-Cell Membrane Protein 3; TIM-3; HAVCR2; TIM3; TIMD3

Background

T-Cell Membrane Protein 3 (TIM3) is a single-pass type I membrane protein that belongs to the TIM family of immunoglobulin superfamily. TIM3 includes a signal sequence (aa 1-21), an extracellular region (aa 22-202) with one Ig-like V-type domain, a transmembrane segment (aa 203-223), and a cytoplasmic domain (aa 224 - 301). TIM3 regulates macrophage activation, inhibits T-helper type 1 lymphocyte (Th1)-mediated auto- and alloimmune responses and promotes immunological tolerance. It may be also involved in T-cell homing and as a receptor for LGALS9.

Note

For Research Use Only , Not for Diagnostic Use.