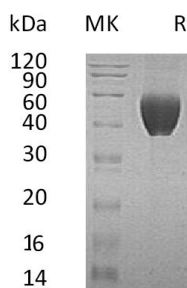


Summary

Name	FSTL1/Follistatin-like 1
Purity	Greater than 95% as determined by reducing SDS-PAGE
Endotoxin level	<1 EU/μg as determined by LAL test.
Construction	Recombinant Human Follistatin-like Protein 1 is produced by our Mammalian expression system and the target gene encoding Glu21-Ile308 is expressed with a 6His tag at the C-terminus.
Accession #	Q12841
Host	Human Cells
Species	Human
Predicted Molecular Mass	33.5 KDa
Formulation	Lyophilized from a 0.2 μm filtered solution of 20mM PB, 150mM NaCl, pH 7.4.
Shipping	The product is shipped at ambient temperature. Upon receipt, store it immediately at the temperature listed below.
Stability&Storage	Store at ≤-70°C, stable for 6 months after receipt. Store at ≤-70°C, stable for 3 months under sterile conditions after opening. Please minimize freeze-thaw cycles.
Reconstitution	Always centrifuge tubes before opening. Do not mix by vortex or pipetting. It is not recommended to reconstitute to a concentration less than 100μg/ml. Dissolve the lyophilized protein in distilled water. Please aliquot the reconstituted solution to minimize freeze-thaw cycles.

SDS-PAGE image



Background

Product Name: Recombinant Human FSTL1 (C-6His)
Catalog #: PHH0682



Alternative Names

Follistatin-Related Protein 1; Follistatin-Like Protein 1; FSTL1; FRP

Background

Follistatin-Related Protein 1 (FSTL1) is a secreted protein that contains two EF-hand domains, one follistatin-like domain, one Kazal-like domain, and one VWFC domain. Its functional significance in physiological and pathological processes is not completely understood. However, FSTL1 is thought to modulate the action of some growth factors on cell proliferation and differentiation. FSTL1 maybe an autoantigen associated with rheumatoid arthritis.

Note

For Research Use Only , Not for Diagnostic Use.