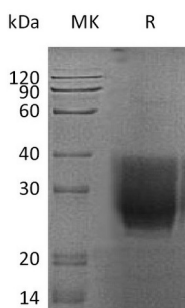


## Summary

<b>Name</b>	CD147/EMMPRIN/Basigin/Extracellular Matrix Metalloproteinase Inducer
<b>Purity</b>	Greater than 95% as determined by reducing SDS-PAGE
<b>Endotoxin level</b>	<1 EU/μg as determined by LAL test.
<b>Construction</b>	Recombinant Human Extracellular Matrix Metalloproteinase Inducer is produced by our Mammalian expression system and the target gene encoding Ala22-His205 is expressed with a 6His tag at the C-terminus.
<b>Accession #</b>	P35613-2
<b>Host</b>	Human Cells
<b>Species</b>	Human
<b>Predicted Molecular Mass</b>	21.16 KDa
<b>Formulation</b>	Lyophilized from a 0.2 μm filtered solution of 20mM PB, 150mM NaCl, pH 7.2.
<b>Shipping</b>	The product is shipped at ambient temperature. Upon receipt, store it immediately at the temperature listed below.
<b>Stability&amp;Storage</b>	Store at ≤-70°C, stable for 6 months after receipt. Store at ≤-70°C, stable for 3 months under sterile conditions after opening. Please minimize freeze-thaw cycles.
<b>Reconstitution</b>	Always centrifuge tubes before opening. Do not mix by vortex or pipetting. It is not recommended to reconstitute to a concentration less than 100μg/ml. Dissolve the lyophilized protein in distilled water. Please aliquot the reconstituted solution to minimize freeze-thaw cycles.

## SDS-PAGE image



## Background

**Product Name: Recombinant Human EMMPRIN (C-6His)**  
**Catalog #: PHH0610**



---

**Alternative Names**

Basigin; 5F7; Collagenase Stimulatory Factor; Extracellular Matrix Metalloproteinase Inducer; EMMPRIN; Leukocyte Activation Antigen M6; OK Blood Group Antigen; Tumor Cell-Derived Collagenase Stimulatory Factor; TCSF; CD147; BSG

**Background**

Extracellular Matrix Metalloproteinase Inducer (EMMPRIN) belongs to the immunoglobulin superfamily, which has the homology to both the immunoglobulin V domain and MHC class II antigen  $\beta$ -chain. EMMPRIN is a transmembrane glycoprotein with different forms, resulting from different modes of glycosylation and N-terminal sequence variants. EMMPRIN can be expressed in breast cancer, oral squamous cell carcinoma, glioma, lymphoma, lung, bladder, and melanoma carcinomas cells. EMMPRIN promotes invasion, metastasis, growth, and survival of malignants cells, serves as a receptor for extracellular cyclophilinthe, may play a role in signal transduction.

**Note**

For Research Use Only , Not for Diagnostic Use.