

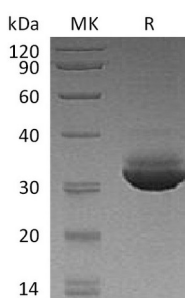
Product Name: Recombinant Human CELA3A (C-6His)
Catalog #: PHH0568



Summary

Name	ELA3A/CELA3A/ELA3
Purity	Greater than 95% as determined by reducing SDS-PAGE
Endotoxin level	<1 EU/μg as determined by LAL test.
Construction	Recombinant Human Chymotrypsin-Like Elastase Family Member 3A is produced by our Mammalian expression system and the target gene encoding Ser16-His270 is expressed with a 6His tag at the C-terminus.
Accession #	AAH07028.1
Host	Human Cells
Species	Human
Predicted Molecular Mass	28.9 KDa
Formulation	Supplied as a 0.2 μm filtered solution of 20mM Tris-HCl, 150mM NaCl, 10% Glycerol, pH 7.5.
Shipping	The product is shipped on dry ice/polar packs. Upon receipt, store it immediately at the temperature listed below.
Stability&Storage	Store at ≤-70°C, stable for 6 months after receipt. Store at ≤-70°C, stable for 3 months under sterile conditions after opening. Please minimize freeze-thaw cycles.
Reconstitution	

SDS-PAGE image



Background

Alternative Names	Chymotrypsin-Like Elastase Family Member 3A; Elastase IIIA; Elastase-3A; Protease E; CELA3A; ELA3; ELA3A
Background	Chymotrypsin-Like Elastase Family Member 3A (CELA3A) is an enzyme that contains one peptidase S1 domain. ELA3A belongs to the peptidase S1 family of the Elastase subfamily. ELA3A is secreted from the pancreas as a zymogen and, like

Product Name: Recombinant Human CELA3A (C-6His)
Catalog #: PHH0568



other serine proteases such as trypsin, chymotrypsin and kallikrein, it has a digestive function in the intestine. ELA3A may also function in the intestinal transport and metabolism of cholesterol. ELA3A is efficient protease with alanine specificity but only little elastolytic activity. ELA3A preferentially cleaves proteins after alanine residues.

Note

For Research Use Only , Not for Diagnostic Use.