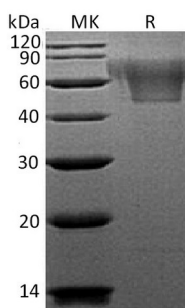


Summary

Name	CX3CL1/Fractalkine
Purity	Greater than 95% as determined by reducing SDS-PAGE
Endotoxin level	<1 EU/μg as determined by LAL test.
Construction	Recombinant Human C-X3-C Motif Chemokine 1 is produced by our Mammalian expression system and the target gene encoding Gln25-Arg339 is expressed with a 6His tag at the C-terminus.
Accession #	P78423
Host	Human Cells
Species	Human
Predicted Molecular Mass	34.36 KDa
Formulation	Lyophilized from a 0.2 μm filtered solution of 20mM PB, 150mM NaCl, pH 7.2.
Shipping	The product is shipped at ambient temperature. Upon receipt, store it immediately at the temperature listed below.
Stability&Storage	Store at ≤-70°C, stable for 6 months after receipt. Store at ≤-70°C, stable for 3 months under sterile conditions after opening. Please minimize freeze-thaw cycles.
Reconstitution	Always centrifuge tubes before opening. Do not mix by vortex or pipetting. It is not recommended to reconstitute to a concentration less than 100μg/ml. Dissolve the lyophilized protein in distilled water. Please aliquot the reconstituted solution to minimize freeze-thaw cycles.

SDS-PAGE image



Background

Product Name: Recombinant Human CX3CL1 (C-6His)
Catalog #: PHH0461



Alternative Names

Fractalkine; C-X3-C Motif Chemokine 1; CX3C Membrane-Anchored Chemokine; Neurotactin; Small-Inducible Cytokine D1; CX3CL1; FKN; NTT; SCYD1

Background

Human Fractalkine (CX3CL1) is a member of the CX3C family of chemokines. Human Fractalkine contains both chemokine and mucin domain. The soluble form of Fractalkine is chemotactic for T-cells and monocytes, but not for neutrophils. The membrane bound form of Fractalkine promotes leukocytes adhesion to endothelial cells. Fractalkine regulates leukocyte adhesion and migration processes at the endothelium and binds to CX3CR1. Natural Human Fractalkine is produced as a long protein (373-amino acid). The mucin-like stalk permits it to bind to the cell surface.

Note

For Research Use Only , Not for Diagnostic Use.