

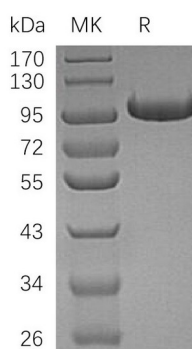
Product Name: Recombinant Human CFB (C-6His)
Catalog #: PHH0436



Summary

Name	Complement Factor B
Purity	Greater than 95% as determined by reducing SDS-PAGE
Endotoxin level	<1 EU/μg as determined by LAL test.
Construction	Recombinant Human Complement Factor B is produced by our Mammalian expression system and the target gene encoding Thr26-Leu764 is expressed with a 6His tag at the C-terminus.
Accession #	AAH04143.1
Host	Human Cells
Species	Human
Predicted Molecular Mass	84.07 KDa
Formulation	Supplied as a 0.2 μm filtered solution of 20mM Tris-HCl, 150mM NaCl, pH 8.0.
Shipping	The product is shipped on dry ice/polar packs. Upon receipt, store it immediately at the temperature listed below.
Stability&Storage	Store at ≤-70°C, stable for 6 months after receipt. Store at ≤-70°C, stable for 3 months under sterile conditions after opening. Please minimize freeze-thaw cycles.
Reconstitution	

SDS-PAGE image



Background

Alternative Names Complement Factor B; C3/C5 Convertase; Glycine-Rich Beta Glycoprotein; GBG; PBF2; Properdin Factor B; CFB; BF; BFD

Background Complement Factor B (CFB) belongs to the peptidase S1 family of enzymes. It is

Product Name: Recombinant Human CFB (C-6His)
Catalog #: PHH0436



expressed by hepatocytes and macrophages and localizes to the major histocompatibility complex (MHC) class III region on chromosome 6. CFB which is a component of the alternate pathway of the complement system is cleaved by factor D into 2 fragments: Ba and Bb. Bb. The active subunit Bb is a serine protease which associates with C3b to form the alternative pathway C3 convertase. Bb is involved in the proliferation of preactivated B lymphocytes, while Ba inhibits their proliferation.

Note

For Research Use Only , Not for Diagnostic Use.