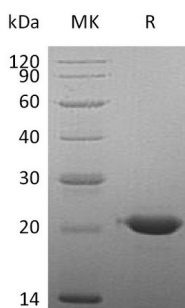


## Summary

<b>Name</b>	CLEC3B/Tetranectin
<b>Purity</b>	Greater than 95% as determined by reducing SDS-PAGE
<b>Endotoxin level</b>	<1 EU/μg as determined by LAL test.
<b>Construction</b>	Recombinant Human C-Type Lectin Domain Family 3 Member B is produced by our Mammalian expression system and the target gene encoding Glu22-Val202 is expressed with a 6His tag at the C-terminus.
<b>Accession #</b>	AAH11024.1
<b>Host</b>	Human Cells
<b>Species</b>	Human
<b>Predicted Molecular Mass</b>	21.21 KDa
<b>Formulation</b>	Lyophilized from a 0.2 μm filtered solution of PBS, pH 7.4.
<b>Shipping</b>	The product is shipped at ambient temperature. Upon receipt, store it immediately at the temperature listed below.
<b>Stability&amp;Storage</b>	Store at ≤-70°C, stable for 6 months after receipt. Store at ≤-70°C, stable for 3 months under sterile conditions after opening. Please minimize freeze-thaw cycles.
<b>Reconstitution</b>	Always centrifuge tubes before opening. Do not mix by vortex or pipetting. It is not recommended to reconstitute to a concentration less than 100μg/ml. Dissolve the lyophilized protein in distilled water. Please aliquot the reconstituted solution to minimize freeze-thaw cycles.

## SDS-PAGE image



## Background

**Product Name: Recombinant Human CLEC3B (C-6His)**  
**Catalog #: PHH0414**



---

**Alternative Names**

Tetranectin; TN; C-Type Lectin Domain Family 3 Member B; Plasminogen Kringle 4-Binding Protein; CLEC3B; TNA

**Background**

C-Type Lectin Domain Family 3 Member B (CLEC3B) is a serum and tissue protein and it contains a C-type lectin which binds to  $Ca^{++}$ . CLEC3B is originally found in plasma, the concentrations approximately 10mg/l. It can bind to kringle 4 of plasminogen and enhance the activation of plasminogen to plasmin, catalyzed by tissue plasminogen activator in the presence of poly-D-lysine. In addition, CLEC3B may be involved in the packaging of molecules destined for exocytosis. Also, CLEC3B is best known as a prognostic marker in ovarian cancer.

**Note**

For Research Use Only , Not for Diagnostic Use.