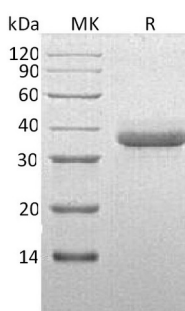


## Summary

<b>Name</b>	Chymotrypsin C/CTRC
<b>Purity</b>	Greater than 95% as determined by reducing SDS-PAGE
<b>Endotoxin level</b>	<1 EU/μg as determined by LAL test.
<b>Construction</b>	Recombinant Human Chymotrypsin-C is produced by our Mammalian expression system and the target gene encoding Cys17-Leu268 is expressed with a 6His tag at the C-terminus.
<b>Accession #</b>	Q99895
<b>Host</b>	Human Cells
<b>Species</b>	Human
<b>Predicted Molecular Mass</b>	29 KDa
<b>Formulation</b>	Supplied as a 0.2 μm filtered solution of 20mM Tris-HCl, 150mM NaCl , pH7.5.
<b>Shipping</b>	The product is shipped on dry ice/polar packs. Upon receipt, store it immediately at the temperature listed below.
<b>Stability&amp;Storage</b>	Store at ≤-70°C, stable for 6 months after receipt. Store at ≤-70°C, stable for 3 months under sterile conditions after opening. Please minimize freeze-thaw cycles.
<b>Reconstitution</b>	

## SDS-PAGE image



## Background

<b>Alternative Names</b>	Chymotrypsin-C; Caldecrin; CTRC; CLCR
<b>Background</b>	Chymotrypsin C (CTRC) is a member of the peptidase S1 family. CTRC is a serum calcium-decreasing factor that has chymotrypsin-like protease activity. CTRC has

**Product Name: Recombinant Human CTRC (C-6His)**  
**Catalog #: PHH0409**



---

broad substrate specificity, but prefers to cleave on the carboxyl side of hydrophobic residues. CTRC is expressed primarily in the pancreas, and is secreted into the digestive tract. CTRC plays a protective role in the pancreas by mitigating premature trypsinogen activation through degradation. It has been proposed that CTRC is a key regulator of digestive zymogen activation and is a physiological coactivator of digestive carboxypeptidases proCPA1 and proCPA2. The mutation of CTRC gene encodes the digestive enzyme CTRC contribute to the development of pancreatitis.

### **Note**

For Research Use Only , Not for Diagnostic Use.