

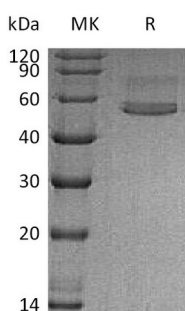
Product Name: Recombinant Human CHIT1 (C-6His)
Catalog #: PHH0405



Summary

Name	Chitotriosidase/CHIT1
Purity	Greater than 95% as determined by reducing SDS-PAGE
Endotoxin level	<1 EU/μg as determined by LAL test.
Construction	Recombinant Human Chitotriosidase-1 is produced by our Mammalian expression system and the target gene encoding Ala22-Asn466 is expressed with a 6His tag at the C-terminus.
Accession #	AAI03696.1
Host	Human Cells
Species	Human
Predicted Molecular Mass	50.43 KDa
Formulation	Supplied as a 0.2 μm filtered solution of 20mM Tris-HCl, 150mM NaCl, pH 7.5.
Shipping	The product is shipped on dry ice/polar packs. Upon receipt, store it immediately at the temperature listed below.
Stability&Storage	Store at ≤-70°C, stable for 6 months after receipt. Store at ≤-70°C, stable for 3 months under sterile conditions after opening. Please minimize freeze-thaw cycles.
Reconstitution	

SDS-PAGE image



Background

Alternative Names	Chitotriosidase-1; Chitinase-1; CHIT1
Background	Chitotriosidase-1 (CHIT1) is a glycoprotein that belongs to the Glycosyl Hydrolase 18 family and Chitinase class II subfamily. It is secreted by cultured macrophages

Product Name: Recombinant Human CHIT1 (C-6His)
Catalog #: PHH0405



and serves to degrade chitin, chitotriose and chitobiose. CHIT1 may participate in the defense against nematodes and other pathogens. It is highly expressed in the plasma of patients with Gauchers disease type I, which can be used as diagnostic aid and to evaluate the success of treatment that brings levels back to normal. The amino acid sequence of human CHIT1 is 99%, 76%, 75% and 55% identical to that of chimpanzee, rat, mouse and fruit fly, respectively.

Note

For Research Use Only , Not for Diagnostic Use.