

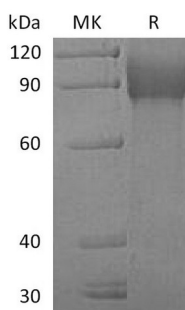
Product Name: Recombinant Human VCAM-1 (C-6His)
Catalog #: PHH0279



Summary

Name	VCAM-1/CD106/L1CAM/Vascular Cell Adhesion Molecule 1
Purity	Greater than 95% as determined by reducing SDS-PAGE
Endotoxin level	<1 EU/μg as determined by LAL test.
Construction	Recombinant Human Vascular Cell Adhesion Protein 1 is produced by our Mammalian expression system and the target gene encoding Phe25-Glu698 is expressed with a 6His tag at the C-terminus.
Accession #	P19320
Host	Human Cells
Species	Human
Predicted Molecular Mass	75.26 KDa
Formulation	Lyophilized from a 0.2 μm filtered solution of 20mM PB, 150mM NaCl, 2mM CaCl ₂ , 2mM MgCl ₂ , 5% Threhalose, pH 7.2.
Shipping	The product is shipped at ambient temperature. Upon receipt, store it immediately at the temperature listed below.
Stability&Storage	Store at ≤-70°C, stable for 6 months after receipt. Store at ≤-70°C, stable for 3 months under sterile conditions after opening. Please minimize freeze-thaw cycles.
Reconstitution	Always centrifuge tubes before opening. Do not mix by vortex or pipetting. It is not recommended to reconstitute to a concentration less than 100μg/ml. Dissolve the lyophilized protein in distilled water. Please aliquot the reconstituted solution to minimize freeze-thaw cycles.

SDS-PAGE image



Background

Product Name: Recombinant Human VCAM-1 (C-6His)
Catalog #: PHH0279



Alternative Names

Vascular Cell Adhesion Protein 1; V-CAM 1; VCAM-1; INCAM-100; CD106; VCAM1; L1CAM

Background

VCAM-1 is a single-pass type I membrane protein, contains 7 Ig-like C2-type domains. It is an endothelial ligand for very late antigen-4 (VLA-4) and $\alpha 4\beta 7$ integrin expressed on leukocytes, and thus mediates leukocyte-endothelial cell adhesion and signal transduction. VCAM-1 expression is induced on endothelial cells during inflammatory bowel disease, atherosclerosis, allograft rejection, infection, and asthmatic responses. During these responses, VCAM-1 forms a scaffold for leukocyte migration. VCAM-1 also activates signals within endothelial cells resulting in the opening of an //

Note

For Research Use Only , Not for Diagnostic Use.