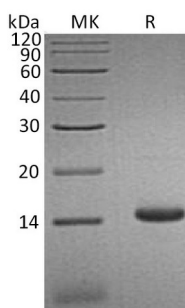


Summary

Name	CCL3L1/MIP-1 alpha Isoform LD78 beta
Purity	Greater than 95% as determined by reducing SDS-PAGE
Endotoxin level	<1 EU/μg as determined by LAL test.
Construction	Recombinant Human C-C Motif Chemokine 3-Like 1 is produced by our Mammalian expression system and the target gene encoding Ala24-Ala93 is expressed with a 6His tag at the C-terminus.
Accession #	P16619
Host	Human Cells
Species	Human
Predicted Molecular Mass	8.82 KDa
Formulation	Lyophilized from a 0.2 μm filtered solution of 20mM PB, 150mM NaCl, pH 7.4.
Shipping	The product is shipped at ambient temperature. Upon receipt, store it immediately at the temperature listed below.
Stability&Storage	Lyophilized protein should be stored at ≤ -20°C, stable for one year after receipt. Reconstituted protein solution can be stored at 2-8°C for 2-7 days. Aliquots of reconstituted samples are stable at ≤ -20°C for 3 months.
Reconstitution	Always centrifuge tubes before opening. Do not mix by vortex or pipetting. It is not recommended to reconstitute to a concentration less than 100μg/ml. Dissolve the lyophilized protein in distilled water. Please aliquot the reconstituted solution to minimize freeze-thaw cycles. Always centrifuge tubes before opening. Do not mix by vortex or pipetting. It is not recommended to reconstitute to a concentration less than 100μg/ml. Dissolve the lyophilized protein in distilled water. Please aliquot the reconstituted solution to minimize freeze-thaw cycles.

SDS-PAGE image



Background

Product Name: Recombinant Human CCL3L1 (C-6His)
Catalog #: PHH0271



Alternative Names

C-C Motif Chemokine 3-Like 1; G0/G1 Switch Regulatory Protein 19-2; LD78-Beta(1-70); PAT 464.2; Small-Inducible Cytokine A3-Like 1; Tonsillar Lymphocyte LD78 Beta Protein; CCL3L1; D17S1718; G0S19-2; SCYA3L1; CCL3L3

Background

C-C Motif Chemokine 3-Like 1 (CCL3L1) is a secreted protein that belongs to the intercrine beta (chemokine CC) family. CCL3L1 is a ligand for CCR1, CCR3 and CCR5. CCL3L1 binds to several chemokine receptors including chemokine binding protein 2 and chemokine (C-C motif) receptor 5 (CCR5). CCR5 is a co-receptor for HIV, and binding of this protein to CCR5 inhibits HIV entry. The processed form LD78-beta (3-70) shows a 20-fold to 30-fold higher chemotactic activity and is a very potent inhibitor of HIV-1-infection. The copy number of this gene varies among individuals: most individuals have 1-6 copies in the diploid genome, although rare individuals have zero or more than six copies. The human genome reference assembly contains two full copies of the gene (CCL3L3 and CCL3L1) and a partial pseudogene. This record represents the more centromeric full-length gene.

Note

For Research Use Only , Not for Diagnostic Use.