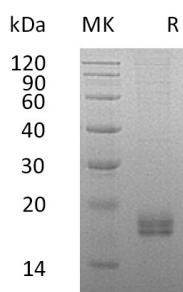


## Summary

<b>Name</b>	CCL24/Eotaxin-2/MPIF-2/C-C motif chemokine 24
<b>Purity</b>	Greater than 95% as determined by reducing SDS-PAGE
<b>Endotoxin level</b>	<1 EU/μg as determined by LAL test.
<b>Construction</b>	Recombinant Human C-C Motif Chemokine 24 is produced by our Mammalian expression system and the target gene encoding Val27-Cys119 is expressed with a 6His tag at the C-terminus.
<b>Accession #</b>	O00175
<b>Host</b>	Human Cells
<b>Species</b>	Human
<b>Predicted Molecular Mass</b>	11.5 KDa
<b>Formulation</b>	Lyophilized from a 0.2 μm filtered solution of 20mM PB, 150mM NaCl, pH 7.4.
<b>Shipping</b>	The product is shipped at ambient temperature. Upon receipt, store it immediately at the temperature listed below.
<b>Stability&amp;Storage</b>	Lyophilized protein should be stored at ≤ -20°C, stable for one year after receipt. Reconstituted protein solution can be stored at 2-8°C for 2-7 days. Aliquots of reconstituted samples are stable at ≤ -20°C for 3 months.
<b>Reconstitution</b>	Always centrifuge tubes before opening. Do not mix by vortex or pipetting. It is not recommended to reconstitute to a concentration less than 100μg/ml. Dissolve the lyophilized protein in distilled water. Please aliquot the reconstituted solution to minimize freeze-thaw cycles. Always centrifuge tubes before opening. Do not mix by vortex or pipetting. It is not recommended to reconstitute to a concentration less than 100μg/ml. Dissolve the lyophilized protein in distilled water. Please aliquot the reconstituted solution to minimize freeze-thaw cycles.

## SDS-PAGE image



## Background

**Product Name: Recombinant Human CCL24 (C-6His)**  
**Catalog #: PHH0265**



---

**Alternative Names**

C-C motif chemokine 24 (CCL24); CK-beta-6; Eosinophil chemotactic protein; Eotaxin-2; Myeloid progenitor inhibitory factor 2; Small-inducible cytokine A24; Ckb-6; MPIF-2; SCYA24

**Background**

Cytokine are a family of secreted proteins involved in immunoregulatory and inflammatory processes. The CC cytokines are proteins characterized by two adjacent cysteine. CCL24 displays the chemotactic for resting T-lymphocytes and eosinophils. CCL24 has lower chemotatic activity for neutrophils, none for monocytes and activated lymphocytes. CCL24 is a strong suppressor of colony formation by a multipotential hematopoietic progenitor cell lines.

**Note**

For Research Use Only , Not for Diagnostic Use.