

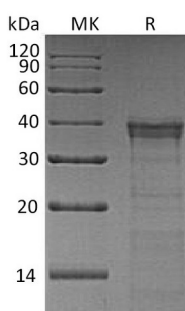
**Product Name: Recombinant Human CTSL2 (C-6His)**  
**Catalog #: PHH0247**



## Summary

<b>Name</b>	Cathepsin L2
<b>Purity</b>	Greater than 95% as determined by reducing SDS-PAGE
<b>Endotoxin level</b>	<1 EU/μg as determined by LAL test.
<b>Construction</b>	Recombinant Human Cathepsin L2/Cathepsin V is produced by our Mammalian expression system and the target gene encoding Val18-Val334 is expressed with a 6His tag at the C-terminus.
<b>Accession #</b>	O60911
<b>Host</b>	Human Cells
<b>Species</b>	Human
<b>Predicted Molecular Mass</b>	36.69 KDa
<b>Formulation</b>	Supplied as a 0.2 μm filtered solution of 20mM MES, 150mM NaCl, 5% Trehalose, 5% Mannitol, 0.01% Tween80, pH5.5.
<b>Shipping</b>	The product is shipped on dry ice/polar packs. Upon receipt, store it immediately at the temperature listed below.
<b>Stability&amp;Storage</b>	Store at ≤-70°C, stable for 6 months after receipt. Store at ≤-70°C, stable for 3 months under sterile conditions after opening. Please minimize freeze-thaw cycles.
<b>Reconstitution</b>	

## SDS-PAGE image



## Background

**Alternative Names** Cathepsin L2; Cathepsin U; Cathepsin V; CTSL2; CATL2; CTSU; CTSV

**Background** Cathepsin L2 belongs to the Peptidase C1 family. Cathepsin L2 can be autocatalytically converted to the mature form as a proenzyme in lysosomes at

**Product Name: Recombinant Human CTSL2 (C-6His)**  
**Catalog #: PHH0247**



---

pH=7.0. Cathepsin L2 cannot be expressed in normal mammary gland, colon and peritumoral tissue, but it can be expressed in breast carcinomas and colorectal tissues. These suggests Cathepsin L2 may play a role in tumor processes. Cathepsin L2 is specifically expressed in the testis, thymus, and corneal epithelium.

**Note**

For Research Use Only , Not for Diagnostic Use.