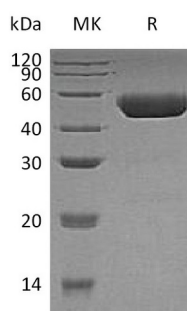


Summary

Name	Cathepsin D/CTSD
Purity	Greater than 95% as determined by reducing SDS-PAGE
Endotoxin level	<1 EU/μg as determined by LAL test.
Construction	Recombinant Human Cathepsin D is produced by our Mammalian expression system and the target gene encoding Leu21-Leu412 is expressed with a 6His tag at the C-terminus.
Accession #	P07339
Host	Human Cells
Species	Human
Predicted Molecular Mass	43.6 KDa
Formulation	Supplied as a 0.2 μm filtered solution of 20mM MES, 150mM NaCl, pH 5.5.
Shipping	The product is shipped on dry ice/polar packs. Upon receipt, store it immediately at the temperature listed below.
Stability&Storage	Store at ≤-70°C, stable for 6 months after receipt. Store at ≤-70°C, stable for 3 months under sterile conditions after opening. Please minimize freeze-thaw cycles.
Reconstitution	

SDS-PAGE image



Background

Alternative Names	Cathepsin D; CTSD; CPSD
Background	The protein acid protease active in intracellular protein breakdown and involved in the pathogenesis of several diseases such as breast cancer and possibly Alzheimer

Product Name: Recombinant Human CTSD (C-6His)
Catalog #: PHH0242



disease. It is specificity similar to, but narrower than, that of pepsin A and it does not cleave the 4-Gln-|-His-5 bond in B chain of insulin. It consists of a light chain and a heavy chain and expressed in the aorta extracellular space. The Val-58 allele is significantly overrepresented in demented patients (11.8%) compared with non-demented controls (4.9%). Carriers of the Val-58 allele have a 3.1-fold increased risk for developing AD than non-carriers. It belongs to the peptidase A1 family.

Note

For Research Use Only , Not for Diagnostic Use.