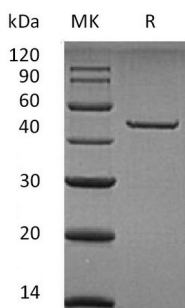


Summary

Name	Carboxypeptidase A2/CPA2
Purity	Greater than 95% as determined by reducing SDS-PAGE
Endotoxin level	<1 EU/ μ g as determined by LAL test.
Construction	Recombinant Human Carboxypeptidase A2 is produced by our Mammalian expression system and the target gene encoding Leu17-Tyr417 is expressed with a 6His tag at the C-terminus.
Accession #	AAP36067.1
Host	Human Cells
Species	Human
Predicted Molecular Mass	45.91 KDa
Formulation	Lyophilized from a 0.2 μ m filtered solution of 20 mM PB, 10% Trehalose, 2% Mannitol, 0.05% Tween 80, pH7.4.
Shipping	The product is shipped at ambient temperature. Upon receipt, store it immediately at the temperature listed below.
Stability&Storage	Store at \leq -70°C, stable for 6 months after receipt. Store at \leq -70°C, stable for 3 months under sterile conditions after opening. Please minimize freeze-thaw cycles.
Reconstitution	Always centrifuge tubes before opening. Do not mix by vortex or pipetting. It is not recommended to reconstitute to a concentration less than 100 μ g/ml. Dissolve the lyophilized protein in distilled water. Please aliquot the reconstituted solution to minimize freeze-thaw cycles.

SDS-PAGE image



Background

Product Name: Recombinant Human CPA2 (C-6His)
Catalog #: PHH0227



Alternative Names Carboxypeptidase A2; CPA2

Background Carboxypeptidase A2 (CPA) is a secreted pancreatic procarboxy-peptidase that cleaves the C-terminal amide or ester bond of peptides that have a free C-terminal carboxyl group. The hydrolytic action of CPA2 was identified with a preference towards long substrates with aromatic amino acids in their C-terminal end, particularly tryptophan. CPA2 comprises a signal peptide, a pro region and a mature chain, and can be activated after cleavage of the pro peptide. Three different forms of human pancreatic procarboxypeptidase A have been isolated, and the A1 and A2 forms are always secreted as monomeric proteins with different biochemical properties. In contrast to procarboxypeptidase B which was always secreted by the pancreas as a monomer, procarboxypeptidase A occurs as a monomer and/or associated to one or two functionally different proteins, such as zymogen E, and is involved in zymogen inhibition.

Note

For Research Use Only , Not for Diagnostic Use.