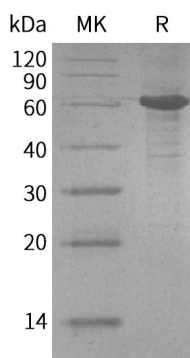


## Summary

<b>Name</b>	Calmegin/CLGN
<b>Purity</b>	Greater than 95% as determined by reducing SDS-PAGE
<b>Endotoxin level</b>	<1 EU/μg as determined by LAL test.
<b>Construction</b>	Recombinant Human Calmegin is produced by our Mammalian expression system and the target gene encoding Glu20-Trp471 is expressed with a 6His tag at the C-terminus.
<b>Accession #</b>	O14967
<b>Host</b>	Human Cells
<b>Species</b>	Human
<b>Predicted Molecular Mass</b>	52.9 KDa
<b>Formulation</b>	Lyophilized from a 0.2 μm filtered solution of 20mM PB, 150mM NaCl, pH 7.4.
<b>Shipping</b>	The product is shipped at ambient temperature. Upon receipt, store it immediately at the temperature listed below.
<b>Stability&amp;Storage</b>	Store at ≤-70°C, stable for 6 months after receipt. Store at ≤-70°C, stable for 3 months under sterile conditions after opening. Please minimize freeze-thaw cycles.
<b>Reconstitution</b>	Always centrifuge tubes before opening. Do not mix by vortex or pipetting. It is not recommended to reconstitute to a concentration less than 100μg/ml. Dissolve the lyophilized protein in distilled water. Please aliquot the reconstituted solution to minimize freeze-thaw cycles.

## SDS-PAGE image



**Product Name: Recombinant Human Calmegin (C-6His)**  
**Catalog #: PHH0202**



---

## Background

**Alternative Names** Calmegin; CLGN

**Background** Calmegin (CLGN) is a member of the calreticulin family. Calmegin is a testis-specific endoplasmic reticulum chaperone protein. The functions during spermatogenesis as a chaperone for a range of client proteins that is important for sperm adhesion onto the egg zona pellucida and for subsequent penetration of the zona pellucida. It is required for normal male fertility, normal sperm migration from the uterus into the oviduct. Calmegin binds calcium ions and interacts with PDILT. Calmegin may play a role in spermatogenesis and infertility.

## Note

For Research Use Only , Not for Diagnostic Use.