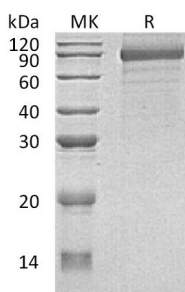


Summary

Name	Cadherin-8/CDH8
Purity	Greater than 95% as determined by reducing SDS-PAGE
Endotoxin level	<1 EU/μg as determined by LAL test.
Construction	Recombinant Human Cadherin-8 is produced by our Mammalian expression system and the target gene encoding Ala30-Met621 is expressed with a 6His tag at the C-terminus.
Accession #	P55286
Host	Human Cells
Species	Human
Predicted Molecular Mass	66.07 KDa
Formulation	Lyophilized from a 0.2 μm filtered solution of 20mM PB, 150mM NaCl, pH 7.4.
Shipping	The product is shipped at ambient temperature. Upon receipt, store it immediately at the temperature listed below.
Stability&Storage	Store at ≤-70°C, stable for 6 months after receipt. Store at ≤-70°C, stable for 3 months under sterile conditions after opening. Please minimize freeze-thaw cycles.
Reconstitution	Always centrifuge tubes before opening. Do not mix by vortex or pipetting. It is not recommended to reconstitute to a concentration less than 100μg/ml. Dissolve the lyophilized protein in distilled water. Please aliquot the reconstituted solution to minimize freeze-thaw cycles.

SDS-PAGE image



Background

Product Name: Recombinant Human CDH8 (C-6His)
Catalog #: PHH0197



Alternative Names

Cadherin-8; CDH8

Background

Cadherin-8 (CDH8) is a type II classical cadherin from the cadherin superfamily. Member of the Cadherin superfamily are integral membrane proteins that mediate calcium-dependent cell-cell adhesion. Cadherin proteins are composed of a large N-terminal extracellular domain, a single membrane-spanning domain, and a small highly conserved C-terminal cytoplasmic domain. Cadherins are calcium dependent cell adhesion proteins. They preferentially interact with themselves in a homophilic manner in connecting cells. The extracellular domain of CDH8 contains five cadherin domains. CDH8 is expressed in brain and is putatively involved in synaptic adhesion, axon outgrowth and guidance.

Note

For Research Use Only , Not for Diagnostic Use.