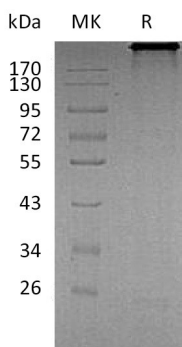


## Summary

<b>Name</b>	Cadherin-6/CDH6
<b>Purity</b>	Greater than 95% as determined by reducing SDS-PAGE
<b>Endotoxin level</b>	<1 EU/μg as determined by LAL test.
<b>Construction</b>	Recombinant Human Cadherin-6 is produced by our Mammalian expression system and the target gene encoding Thr19-Ala615&Ser54-Ala615 is expressed with a human IgG1 Fc tag at the C-terminus.
<b>Accession #</b>	P55285
<b>Host</b>	Human Cells
<b>Species</b>	Human
<b>Predicted Molecular Mass</b>	93.5 KDa(pro), 90 KDa(mature)
<b>Formulation</b>	Lyophilized from a 0.2 μm filtered solution of PBS, pH 7.4.
<b>Shipping</b>	The product is shipped at ambient temperature. Upon receipt, store it immediately at the temperature listed below.
<b>Stability&amp;Storage</b>	Store at ≤-70°C, stable for 6 months after receipt. Store at ≤-70°C, stable for 3 months under sterile conditions after opening. Please minimize freeze-thaw cycles.
<b>Reconstitution</b>	Always centrifuge tubes before opening. Do not mix by vortex or pipetting. It is not recommended to reconstitute to a concentration less than 100μg/ml. Dissolve the lyophilized protein in distilled water. Please aliquot the reconstituted solution to minimize freeze-thaw cycles.

## SDS-PAGE image



**Product Name: Recombinant Human CDH6 (C-Fc)**  
**Catalog #: PHH0195**



---

## Background

**Alternative Names** Cadherin-6; Kidney Cadherin; K-Cadherin; CDH6

**Background** Cadherin-6 (CDH6) is a type-II classic cadherin cell-cell adhesion molecules, which are expressed in graded or areal patterns, as well as layer-specific patterns, in the cortical plate. Human Cadherin-6 is synthesized as a 790 aa type I transmembrane glycoprotein that contains a 18 aa signal peptide, a 35 aa propeptide, a 562 aa extracellular region, a 21 aa transmembrane segment, and a 154 aa cytoplasmic domain. There are five cadherin domains of approximately 110 aa each in the extracellular region. Cadherin-6 has high expression in kidney, brain, and cerebellum, and may contribute to the formation of the segmental structure of the early brain, as well as the development of renal proximal tubules. Weak expression is also detected in lung, pancreas, gastric mucosa and cytotrophoblasts. As a classic cadherin, Cadherin-6 will form homodimers and promote intercellular adhesion with itself and, possibly, Cadherin-9 and -14.

## Note

For Research Use Only , Not for Diagnostic Use.