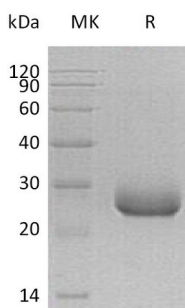


## Summary

<b>Name</b>	C2orf7/PRADC1
<b>Purity</b>	Greater than 95% as determined by reducing SDS-PAGE
<b>Endotoxin level</b>	<1 EU/μg as determined by LAL test.
<b>Construction</b>	Recombinant Human Protease-associated Domain-containing Protein 1 is produced by our Mammalian expression system and the target gene encoding His22-Trp188 is expressed with a 6His tag at the C-terminus.
<b>Accession #</b>	Q9BSG0
<b>Host</b>	Human Cells
<b>Species</b>	Human
<b>Predicted Molecular Mass</b>	20 KDa
<b>Formulation</b>	Lyophilized from a 0.2 μm filtered solution of 20mM PB, 150mM NaCl, pH 7.4.
<b>Shipping</b>	The product is shipped at ambient temperature. Upon receipt, store it immediately at the temperature listed below.
<b>Stability&amp;Storage</b>	Store at ≤-70°C, stable for 6 months after receipt. Store at ≤-70°C, stable for 3 months under sterile conditions after opening. Please minimize freeze-thaw cycles.
<b>Reconstitution</b>	Always centrifuge tubes before opening. Do not mix by vortex or pipetting. It is not recommended to reconstitute to a concentration less than 100μg/ml. Dissolve the lyophilized protein in distilled water. Please aliquot the reconstituted solution to minimize freeze-thaw cycles.

## SDS-PAGE image



## Background

**Product Name: Recombinant Human PRADC1 (C-6His)**  
**Catalog #: PHH0187**



---

**Alternative Names**

Protease-associated domain-containing protein 1;Protease-associated domain-containing protein of 21 kDa;Hpap21;C2orf7; PAP21;UNQ833/PRO1760

**Background**

PRADC1, also known as C2orf7 or PAP21, is short for Protease-associated domain-containing protein 1. It is a 188 aa. with a 21 aa. signal, and the 171 located Asn can be glycosylated. PRADC1 has two mutagenesis which are N121Q and N171Q. This protein is secreted and highly expressed in skeletal muscle, heart and liver. It is expressed at intermediate level in kidney.

**Note**

For Research Use Only , Not for Diagnostic Use.