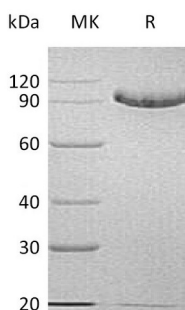


## Summary

<b>Name</b>	C1q R1/CD93
<b>Purity</b>	Greater than 95% as determined by reducing SDS-PAGE
<b>Endotoxin level</b>	<1 EU/μg as determined by LAL test.
<b>Construction</b>	Recombinant Human Complement Component C1q Receptor is produced by our Mammalian expression system and the target gene encoding Ala24-Lys580 is expressed with a 6His tag at the C-terminus.
<b>Accession #</b>	Q9NPY3
<b>Host</b>	Human Cells
<b>Species</b>	Human
<b>Predicted Molecular Mass</b>	59.15 KDa
<b>Formulation</b>	Lyophilized from a 0.2 μm filtered solution of PBS, pH 7.4.
<b>Shipping</b>	The product is shipped at ambient temperature. Upon receipt, store it immediately at the temperature listed below.
<b>Stability&amp;Storage</b>	Store at ≤-70°C, stable for 6 months after receipt. Store at ≤-70°C, stable for 3 months under sterile conditions after opening. Please minimize freeze-thaw cycles.
<b>Reconstitution</b>	Always centrifuge tubes before opening. Do not mix by vortex or pipetting. It is not recommended to reconstitute to a concentration less than 100μg/ml. Dissolve the lyophilized protein in distilled water. Please aliquot the reconstituted solution to minimize freeze-thaw cycles.

## SDS-PAGE image



## Background

**Product Name: Recombinant Human C1q R1 (C-6His)**  
**Catalog #: PHH0184**



---

**Alternative Names**

Complement Component C1q Receptor; C1q/MBL/SPA Receptor; C1qR; C1qR(p); C1qRp; CDw93; Complement Component 1 q Subcomponent Receptor 1; Matrix-Remodeling-Associated Protein 4CD93; C1QR1; MXRA4

**Background**

C1q R1 is also known as CD93, collectin receptor, and AA4 antigen, belongs to the Group XIV C-Type lectin family which play a role not only in cell-cell adhesion processes but also in host defence. All of them contain a C-type lectin domain, a series of epidermal growth factor like domains (EGF), a highly glycosylated mucin-like domain, a unique transmembrane domain and a short cytoplasmic tail. C1q R1 has also been identified as a hematopoietic stem cell marker.

**Note**

For Research Use Only , Not for Diagnostic Use.