

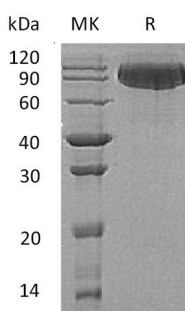
**Product Name: Recombinant Human BCHE (C-6His)**  
**Catalog #: PHH0182**



## Summary

<b>Name</b>	Butyrylcholinesterase/BCHE
<b>Purity</b>	Greater than 95% as determined by reducing SDS-PAGE
<b>Endotoxin level</b>	<1 EU/μg as determined by LAL test.
<b>Construction</b>	Recombinant Human Butyrylcholine Esterase is produced by our Mammalian expression system and the target gene encoding Glu29-Leu602 is expressed with a 6His tag at the C-terminus.
<b>Accession #</b>	P06276
<b>Host</b>	Human Cells
<b>Species</b>	Human
<b>Predicted Molecular Mass</b>	66.12 KDa
<b>Formulation</b>	Supplied as a 0.2 μm filtered solution of 20mM Tris-HCl, 150mM NaCl, pH 7.5.
<b>Shipping</b>	The product is shipped on dry ice/polar packs. Upon receipt, store it immediately at the temperature listed below.
<b>Stability&amp;Storage</b>	Store at ≤-70°C, stable for 6 months after receipt. Store at ≤-70°C, stable for 3 months under sterile conditions after opening. Please minimize freeze-thaw cycles.
<b>Reconstitution</b>	

## SDS-PAGE image



## Background

<b>Alternative Names</b>	Cholinesterase; Acylcholine Acylhydrolase; Butyrylcholine Esterase; Choline Esterase II; Pseudocholinesterase; BCHE; CHE1
<b>Background</b>	Butyrylcholine Esterase (BCHE) is a secreted protein that belongs to the type-B carboxylesterase/lipase family. BCHE is a major acetylcholine hydrolyzing enzyme

**Product Name: Recombinant Human BCHE (C-6His)**  
**Catalog #: PHH0182**



---

in the circulation. It is detected in blood plasma and present in most cells except erythrocytes. BCHE is an esterase with broad substrate specificity. BCHE can contribute to the inactivation of the neurotransmitter acetylcholine. BCHE can degrade a large number of neurotoxic organophosphate esters. Thus, it plays important pharmacological and toxicological roles and is thought to be involved in the pathological progression. Defects in BCHE are the cause of butyrylcholinesterase deficiency (BChE deficiency) which is a metabolic disorder characterized by prolonged apnoea after the use of certain anesthetic drugs, including the muscle relaxants succinylcholine and other ester local anesthetics.

**Note**

For Research Use Only , Not for Diagnostic Use.