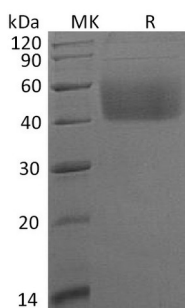


Summary

Name	B7-H6/B7 Homolog 6/NCR3LG1
Purity	Greater than 95% as determined by reducing SDS-PAGE
Endotoxin level	<1 EU/μg as determined by LAL test.
Construction	Recombinant Human B7 Homolog 6 is produced by our Mammalian expression system and the target gene encoding Asp25-Ser262 is expressed with a 6His tag at the C-terminus.
Accession #	Q68D85
Host	Human Cells
Species	Human
Predicted Molecular Mass	27.5 KDa
Formulation	Lyophilized from a 0.2 μm filtered solution of PBS, pH 7.4.
Shipping	The product is shipped at ambient temperature. Upon receipt, store it immediately at the temperature listed below.
Stability&Storage	Store at ≤-70°C, stable for 6 months after receipt. Store at ≤-70°C, stable for 3 months under sterile conditions after opening. Please minimize freeze-thaw cycles.
Reconstitution	Always centrifuge tubes before opening. Do not mix by vortex or pipetting. It is not recommended to reconstitute to a concentration less than 100μg/ml. Dissolve the lyophilized protein in distilled water. Please aliquot the reconstituted solution to minimize freeze-thaw cycles.

SDS-PAGE image



Background

Product Name: Recombinant Human B7-H6 (C-6His)
Catalog #: PHH0121



Alternative Names

Natural cytotoxicity triggering receptor 3 ligand 1; B7 homolog 6; B7-H6; NCR3LG1; B7H6

Background

Natural cytotoxicity triggering receptor 3 ligand 1 (B7-H6) is a glycosylated member of the B7 family of immune costimulatory proteins. Mature human B7-H6 consists of a 238 amino acid (aa) extracellular domain (ECD) that contains one Ig-like V domain and one Ig-like C1 domain, a 21 aa transmembrane segment, and a 171 aa cytoplasmic domain that contains one ITIM, one SH2, and one SH3 motif. Both of the Ig-like domains carry N-linked glycosylation. The Ig-like V domain mediates 1:1 stoichiometric binding of B7-H6 to NKp30 expressed on NK cells. It does not show binding to NKp44, NKp46, or NKG2D. Ligation of NKp30 by B7-H6 induces NK cell activation and target cell cytolysis. B7-H6 is expressed on a wide range of hematopoietic, carcinoma, and melanoma tumor cells, which is consistent with the detection of NKp30 binding sites on many tumors.

Note

For Research Use Only , Not for Diagnostic Use.